

# PRODUCT CATALOGUE NEW ZEALAND

2024/25





## Assisting You Across New Zealand

### General

Enquiries: [welcome@proclima.co.nz](mailto:welcome@proclima.co.nz)  
Orders: [order@proclima.co.nz](mailto:order@proclima.co.nz)  
Technical: [support@proclima.co.nz](mailto:support@proclima.co.nz)  
Freephone: 0800 PRO CLIMA (776 254)  
Web: [www.proclima.co.nz](http://www.proclima.co.nz)

### Auckland Showroom, Shop & Office

Unit P, 63 Hugo Johnston Drive, Penrose  
Phone: 09 892 9900

### Wellington Showroom & Office

Level 1, 47 The Esplanade, Petone,  
Lower Hutt  
Phone: 04 589 8460

**Richard Hollard**  
Specification Manager  
09 892 9900  
[richard.hollard@proclima.co.nz](mailto:richard.hollard@proclima.co.nz)



**Simon Cator**  
Upper North Island Sales Manager  
09 892 9900  
[simon.cator@proclima.co.nz](mailto:simon.cator@proclima.co.nz)



**Soren Webb**  
Lower North Island Sales Manager  
04 589 8460  
[soren.webb@proclima.co.nz](mailto:soren.webb@proclima.co.nz)



**Ben Ingledew**  
Upper South Island Sales Manager  
03 983 0340  
[ben.ingledew@proclima.co.nz](mailto:ben.ingledew@proclima.co.nz)



**Catherine McGregor**  
Lower South Island Sales Manager  
Phone: 03 352 9746  
Email: [catherine.mcgregor@proclima.co.nz](mailto:catherine.mcgregor@proclima.co.nz)



## CONTENT



### Contact

Page  
2



### Weathertightness – Roof and Wall Weather Resistive Barriers

SOLITEX®	6-7
SOLITEX EXTASANA ADHERO®	8-9
PRESSFIX / PRESSFIX XL	9
SOLITEX® ADHERO VISTO	10
ADHERO® VISTO Floor Drain	11
SOLITEX EXTASANA®	12-13
SOLITEX MENTO®	14-15
SOLITEX® UM connect	16
8mm SEPARATION MESH	17



### Adhesives, tapes and accessories for Weathertightness Systems

TESCON EXTORA®	19-20
TESCON EXTOSEAL®	21
TESCON® NAIDECK	22
ORCON® CLASSIC	23
CONTEGA® EXO	24
COMPEGO	25
DUPLEX	26
TESCON® PRIMER RP	27
ROFLEX	29-31
KAFLEX	32-33



### Airtightness – Intelligent Air Barriers

What is airtightness	36
Why is an intelligent airtightness system necessary in New Zealand?	36
Build Airtight	37
Benefits of moisture control and airtightness	37
INTELLO®	38-41



### Adhesives, tapes and accessories for Airtightness Systems

TESCON®	43-44
ORCON® CLASSIC	45
CONTEGA®	46-47
INSTAABOX	48
DUPLEX	49
KAFLEX	50-51
ROFLEX	52-54
SOLITEX® UM connect	55
DASATOP®	56-57
AEROSANA®	58-60
AEROFIXX	61



### Education & Quality Control

Building Science	62
Certified Installer Training	62
WUFI® Hygrothermal Modelling	62
pro clima CUBE	62
Blower Door Airtightness Testing	63
WINCON	63
100 Year Adhesion	64

# EXTERNAL WEATHERTIGHTNESS

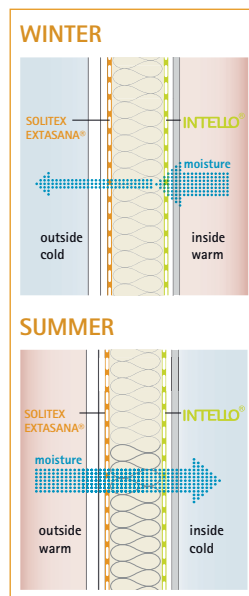
WEATHER RESISTIVE BARRIERS (WRB)







## Weathertightness is the ability of a building to protect itself and us from the weather.

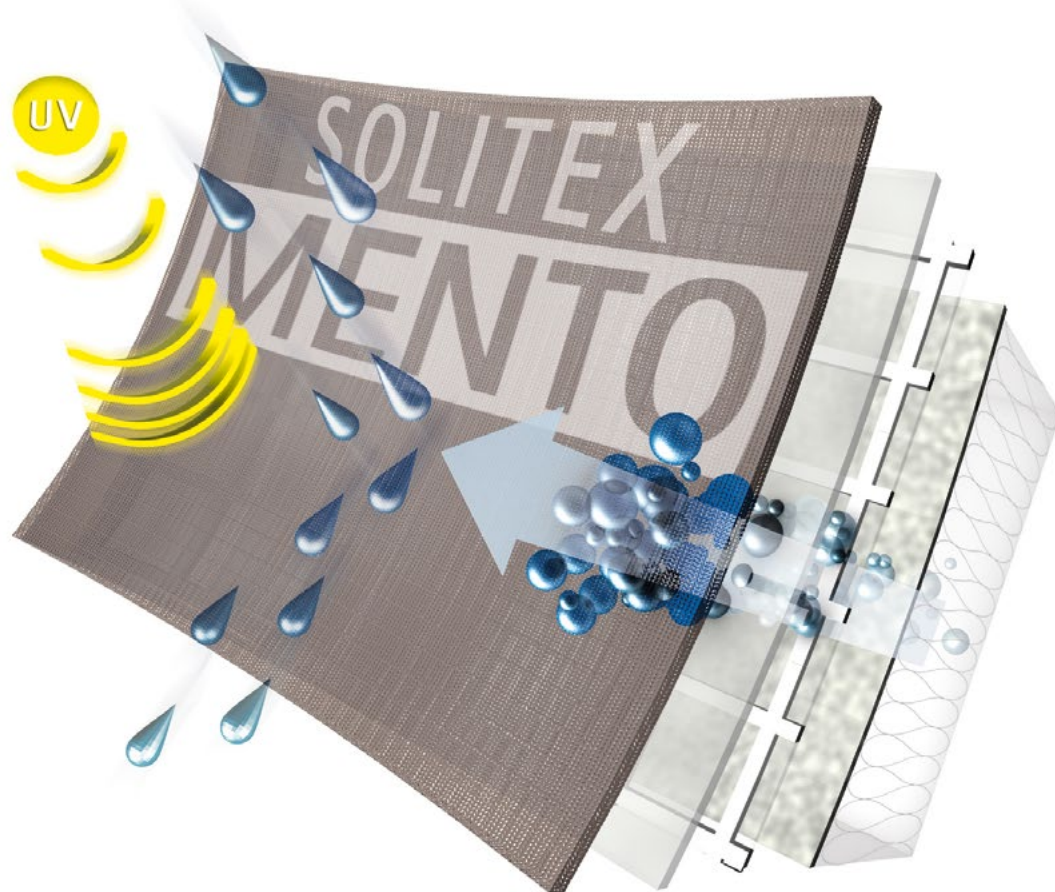


Weather is a combination of forces that are constantly driving the elements of air and water. These forces and elements combine to create physical properties such as temperature, wind speed, rainfall, humidity, and air pressure. Our buildings should be designed and constructed to shelter us from the adverse effects of wind, water, and the sun. Weathertight construction contributes to the health and comfort of people inside the building, while also ensuring the building will stand the test of time.

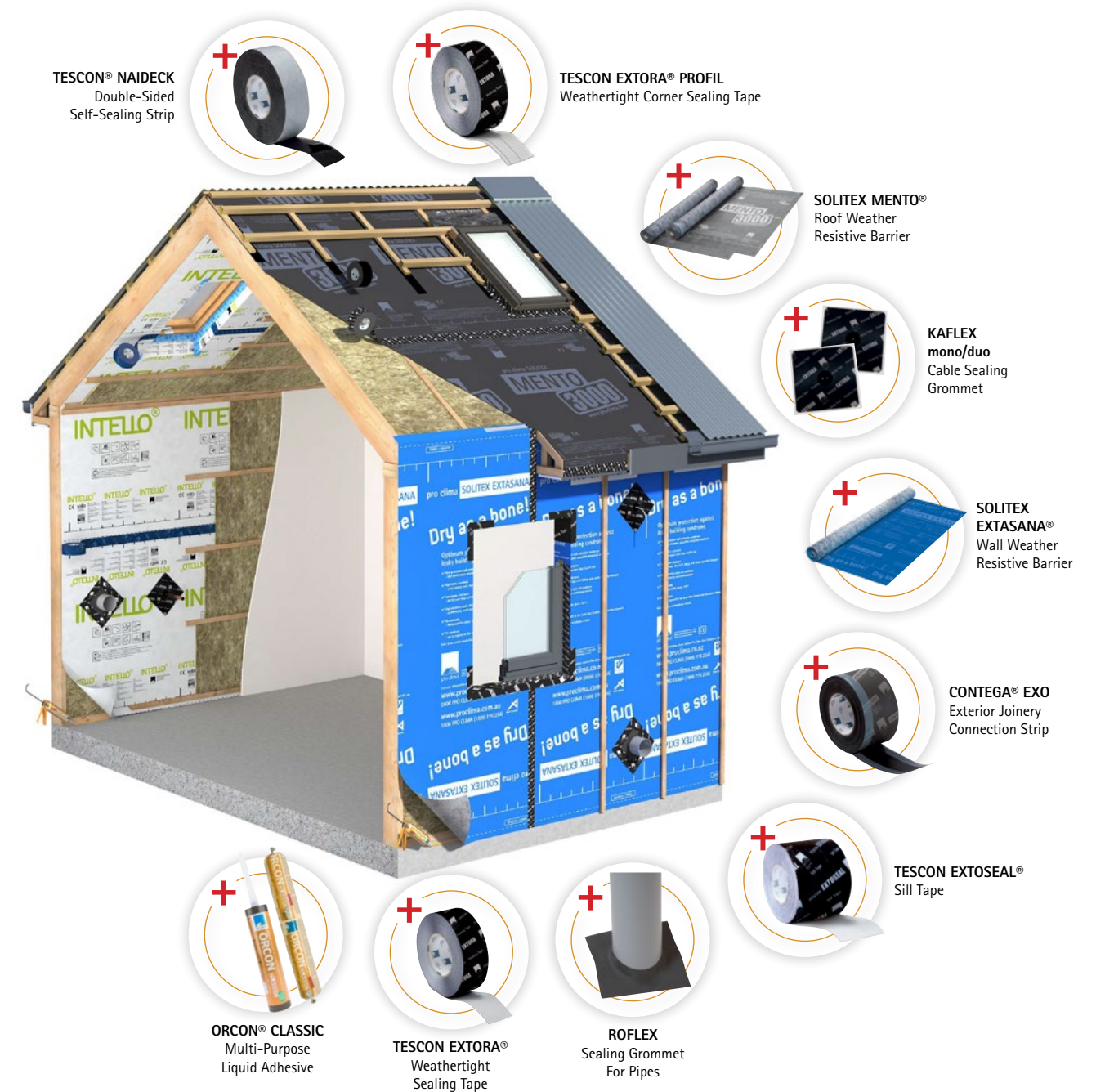
### SOLITEX®

The best weathertightness is achieved with high performance, monolithic, non-porous Weather Resistive Barriers (WRBs) which provide:

- ✓ **High water resistance** - Three-layers with non-porous, diffusion-open membrane
- ✓ **High UV resistance** - From 30 to 180 days exposure in New Zealand
- ✓ **Low vapour resistance** - TEEE film for active moisture transport and drying
- ✓ **High thermostability** - Extremely high temperature resistance 100 - 120°C
- ✓ **High rip and nail tear resistance** - Durable in high wind zones
- ✓ **Fire rated** - Low flammability index



## A Systems Approach



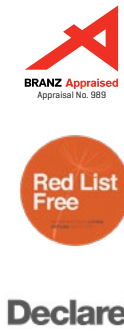
## Effective weathertightness relies on a complete system.

This begins with good design and product selection. With liquid water and water vapour being continually driven by wind and air pressure, it's critical to pay attention to the details.

A weathertightness system must be continuous around all junctions and penetrations to provide effective overall protection. Pro Clima offers a complete range of membranes, tape and accessories to ensure your building can withstand the ever-changing conditions of the natural elements.







# SOLITEX EXTASANA ADHERO®

Self-Adhesive Weather Resistive Barrier

**APPLICATION:** SOLITEX EXTASANA ADHERO® provides the ultimate weather protection layer for walls and roofs under all conditions. Once fully adhered to rigid substrates, SOLITEX EXTASANA ADHERO® protects the building from wind, driving rain, and other external water sources while allowing any internal moisture to escape through the vapour permeable, non-porous TEEE\* layer. TEEE layer is a robust, flexible, non-porous thermoplastic layer that prevents rain ingress while still allowing drying or moisture.

- ADVANTAGES:**
- ✓ Fully self-adhered membrane
  - ✓ Superior UV resistance (180 days exposure)
  - ✓ Ultimate resistance against extreme wind gusts
  - ✓ Ideal for pre-fab system
  - ✓ Fire retardant

**SYSTEM PRODUCTS:**  
TESCON EXTORA®; TESCON EXTOSEAL®; ORCON® CLASSIC; KAFLEX; ROFLEX; CONTEGA® EXO

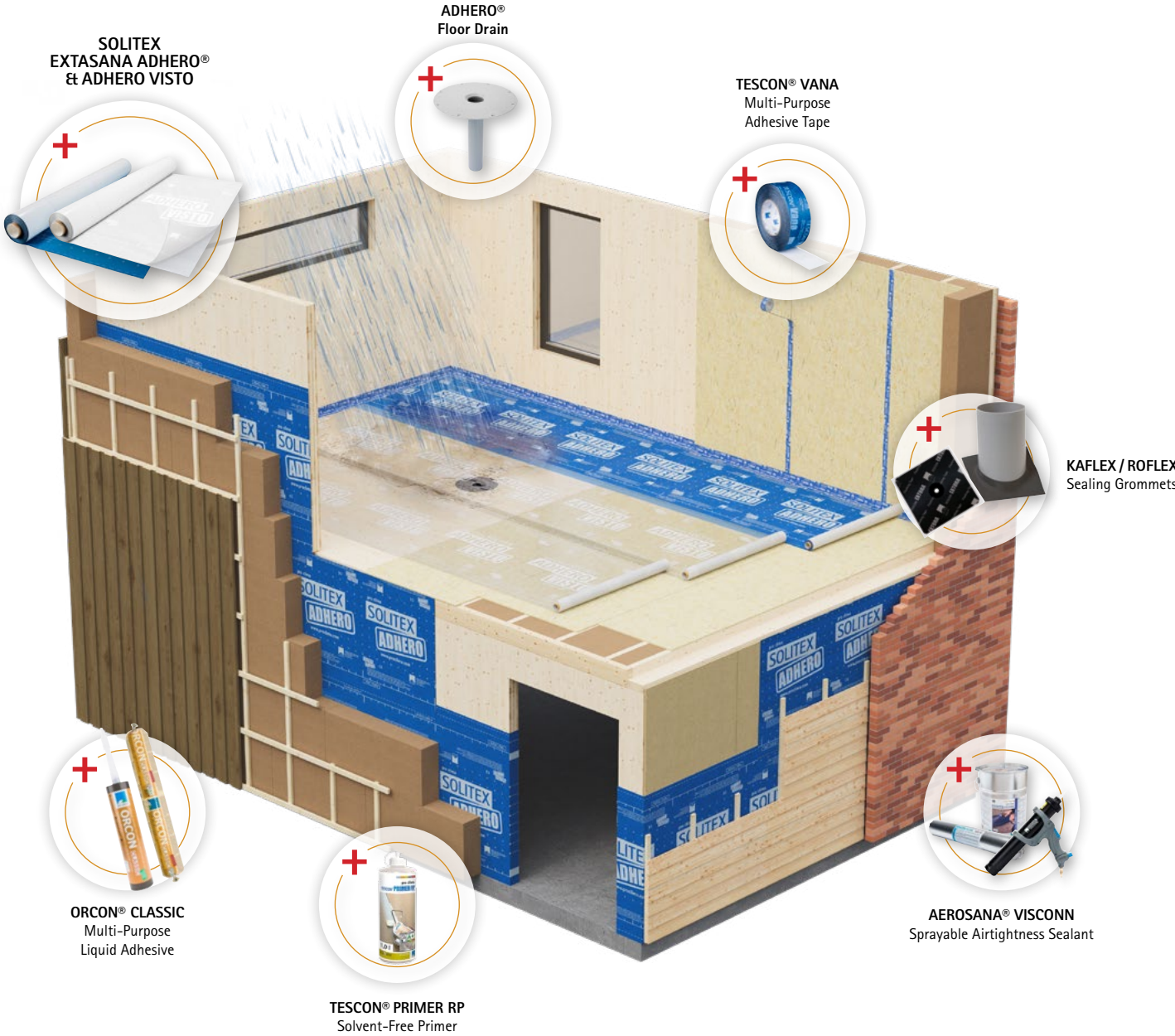
ID CODE	LENGTH	WIDTH	AREA	KG/ROLL	QTY
1AR01968	30 m	1.50 m	45 m²	12	1

<b>TECHNICAL DATA:</b>		
Cover-fleece + protective-layer:	PP microfibre fleece	
Membrane:	monolithic TEEE film	
Surface weight:	240 g/m² ± 5 g/m²	EN1489-2
Thickness :	0.7 ± 0.05 mm	EN1489-2
Edge tear:	Depending on Substrate*	TAPPI T470
Tensile strength:	Depending on Substrate*	AS 1301.448s-1991
Temperature resistance:	-40 °C to + 100 °C	
Moisture Vapour Transmission Resistance (MVTR):	Depending on Substrate*	
Vapour permeance:	Depending on Substrate*	
Water control:	10,000 mm	EN 20811
Flammability index:	<5	AS 1530.2
Air control:	Air barrier	AS/NZS 4200.1 - 2017
UV stability and outdoor exposure:	180 Days	ASTM G154

\*Performance characteristics will be modified by the rigid substrate



# SOLITEX ADHERO® SYSTEM



# PRESSFIX/PRESSFIX XL

Pressing aid for adhesive tapes and SOLITEX EXTASANA ADHERO® Weather Resistive Barrier

**APPLICATION:** Practical tool pressing adhesive tapes and membranes into place evenly.

PRODUCT	ID CODE	LENGTH	WIDTH	QTY
PRESSFIX	16134	105 mm	80 mm	10
PRESSFIX XL	1AR01658	285 mm	130 mm	1

Single Pressfix (small) supplied free in complete boxes of VANA, EXTORA, and EXTOSEAL tapes.







# SOLITEX® ADHERO VISTO

Transparent full-surface adhesive weathering-protection membrane

**APPLICATION:** SOLITEX® ADHERO VISTO provides the ultimate weather protection during construction. Thanks to its full-surface adhesion, this membrane provides airtightness and weather protection for intermediate floors on multi-storey mass timber (e.g. cross-laminated timber) or wooden-frame buildings during the construction period.

**ADVANTAGES:**

- ✓ Protects the structure against weathering during the construction phase
- ✓ 42 days outdoor exposure
- ✓ Preparation work is made easier: markings, connectors and penetrations on timber floors remain visible
- ✓ Safe working: anti-slip surface, even in wet conditions
- ✓ Water-resistant SOLID adhesive ensures quick adhesion to the subsurface and within overlap areas

ID CODE	LENGTH	WIDTH	AREA	KG/ROLL	QTY
1AR04026	30 m	1.50 m	45 m²	10.5	1

**TECHNICAL DATA:**

Fleece:	Polypropylene	
Membrane:	Polyethylene copolymer	
Adhesive:	Water-resistant SOLID adhesive	
Release film:	Silicone-coated PE film	
Thickness:	0.35 mm ± 0.05 mm	EN1849-2
Surface weight:	210 g/m² ± 5 g/m²	EN1849-2
Flammability index:	<5	AS 1530.2
Temperature resistance:	-40 °C to +80 °C	
Heat shrinkage @ 70°C:	-0.4% / 0.0%	ASTM D1204
Moisture Vapour Transmission Resistance (MVTR):	Depending on Substrate*	
Water control:	10,000 mm	EN ISO 811
	Pass (> 100 mm)	AS/NZS 4201.4
	Water barrier	AS/NZS 4200.1
Surface water absorbency:	Low (< 100 g/m²)	AS/NZS 4200.1; AS/NZS 4201.6
Air control:	≥ 0.1 MNs/m³	ISO 5636.5; BS 6538.3
	Air barrier	AS/NZS 4200.1
Moisture shrinkage:	N/A (fully adhered membrane)	AS/NZS 4201.3

\*Performance characteristics will be modified by the rigid substrate



# ADHERO® FLOOR DRAIN

As part of the SOLITEX ADHERO® systems

**APPLICATION:** Fitting for vertical drainage through the ceiling or roof structure during construction. Connect to a pipe system for temporary drainage of water.

**ADVANTAGES:**

- ✓ Quick installation—simply drill through the building component
- ✓ Dependable drainage: reliable run-off thanks to extra-flat flange, low fitting height
- ✓ Watertight sealing: transition between SOLITEX ADHERO® and floor drain can be sealed with TESCON EXTORA® adhesive tape

ID CODE	QTY
1AR03200	1

**TECHNICAL DATA:**

Material:	PVC
Colour:	grey
Thickness:	3.5 mm
Flange O/D:	320 mm
Pipe O/D:	63 mm







CodeMark»  
CMNZ30032



Declare.



# SOLITEX EXTASANA®

## Wall Weather Resistive Barrier

**APPLICATION:** SOLITEX EXTASANA® wall underlay provides the best weather protection layer for external walls under all conditions. It protects the building from wind, driving rain, and other external sources of water while allowing any internal moisture to escape through the vapour permeable, non-porous TEEE\* layer.

**ADVANTAGES:**

- ✓ Excellent UV resistance (180 days exposure)
- ✓ Highly vapour permeable (Class 4)
- ✓ Long-term durability
- ✓ Weathertight & airtight Weather-Resistive Barrier (WRB)
- ✓ Next-generation non-porous monolithic technology
- ✓ Fire retardant

**SYSTEM PRODUCTS:**

TESCON EXTORA®; TESCON EXTOSEAL®; ORCON® CLASSIC; KAFLEX; ROFLEX; CONTEGA® EXO

ID CODE	LENGTH	WIDTH	AREA	KG/ROLL	QTY
13547	36.5 m	1.50 m	55 m <sup>2</sup>	8.5	1
13323	36.5 m	2.74 m	100 m <sup>2</sup>	16	1

**TECHNICAL DATA:**

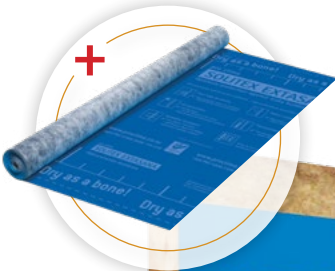
Cover-fleece + protective-layer:	PP microfibre fleeces		
Membrane:	monolithic TEEE film		
Surface weight:	140 g/m <sup>2</sup> ± 5 g/m <sup>2</sup>	EN1489-2	
Thickness:	0.60mm ± 0.05mm	EN1489-2	
Edge tear:	MD / CD 251 N / 188 N	TAPPI T470	
Tensile strength:	MD / CD 4.8 kN/m / 3.7 kN/m	AS 1301.448s-1991	
Temperature resistance:	-40 °C to + 120 °C		
Moisture Vapour Transmission Resistance (MVTR):	0.459 MN.s/g	ASTM E96 Method B	
Water control:	10,000 mm	EN 20811	
Flammability index:	<5	AS 1530.2	
Air control:	Air barrier	AS/NZS 4200.1-2017	
UV stability and outdoor exposure:	180 Days	ASTM G154	

\*Performance characteristics will be modified by the rigid substrate



# SOLITEX EXTASANA® SYSTEM

SOLITEX EXTASANA®  
Wall Weather Resistive Barrier



KAFLEX mono/duo  
Cable Sealing Grommet



TESCON EXTOSEAL®  
Sill Tape



ROFLEX  
Sealing  
Grommet  
For Pipes



TESCON EXTORA®  
Weathertight  
Sealing Tape



ORCON® CLASSIC  
Multi-Purpose  
Liquid Adhesive







# SOLITEX MENTO®

## Roof Weather Resistive Barrier

**APPLICATION:** SOLITEX MENTO® provides superior weather and condensation protection for your roof under all weather conditions. With type R4 classification (NZS 2295), it is suitable to be used in self-supported applications up to and including extra high wind zones. SOLITEX MENTO® protects your roof and building envelope from the elements during construction while allowing any internal moisture to escape through the vapour permeable, non-porous TEEE layer.

### ADVANTAGES:

- ✓ Excellent UV resistance
- ✓ Highly vapour permeable
- ✓ Long-term durability and high strength
- ✓ Weathertight & airtight Weather-Resistive Barrier (WRB)
- ✓ Helps protect a building from condensation
- ✓ Fire Retardant (FI <5 as per AS/NZS 1530.2)

PRODUCT	ID CODE	LENGTH	WIDTH	AREA	KG/ROLL	QTY
SOLITEX MENTO® 1000	15048	50 m	1.50 m	75 m²	9	1
SOLITEX MENTO® 1000	1AR01359	50 m	3.00 m	150 m²	18	1
SOLITEX MENTO® 1000 connect	1AR01361	50 m	1.50 m	75 m²	9	1
SOLITEX MENTO® 1000 connect	1AR01357	50 m	3.00 m	150 m²	18	1
SOLITEX MENTO® 3000	13648	50 m	1.50 m	75 m²	11	1
SOLITEX MENTO® 3000	15390	50 m	3.00 m	150 m²	22	1
SOLITEX MENTO® 3000 connect	15391	50 m	1.50 m	75 m²	11	1
SOLITEX MENTO® 3000 connect	1AR00548	50 m	3.00 m	150 m²	22	1

### TECHNICAL DATA:

	MENTO 1000	MENTO 3000
Cover-fleece + protective-layer:	PP microfibre fleeces	PP microfibre fleeces
Membrane:	monolithic TEEE film	monolithic TEEE film
Surface weight:	115 g/m² ± 5 g/m²	150 g/m² ± 5 g/m²
Thickness:	0.4 mm ± 0.05 mm	0.45 mm ± 0.05 mm
Edge tear:	MD/CD: 222 N / 174 N	263 N / 208 N
Tensile strength:	MD/CD: 4.8 kN/m / 3.6 kN/m	5.1 kN/m / 3.7 kN/m
Temperature resistance:	-40 °C to + 100 °C	-40 °C to + 120 °C
Moisture Vapour Transmission Resistance (MVTR):	0.398 MN.s/g	0.459 MN.s/g
Water control:	10,000 mm	10,000 mm
Flammability index:	<5	<5
Air control:	air barrier	air barrier
UV stability and outdoor exposure:	30 days	90 days

#### SOLITEX MENTO® 1000

Three-layer roof underlay  
30 days exposure, light-weight,  
high wear-resistance, high  
resistance to driving rain,  
very high thermal stability.

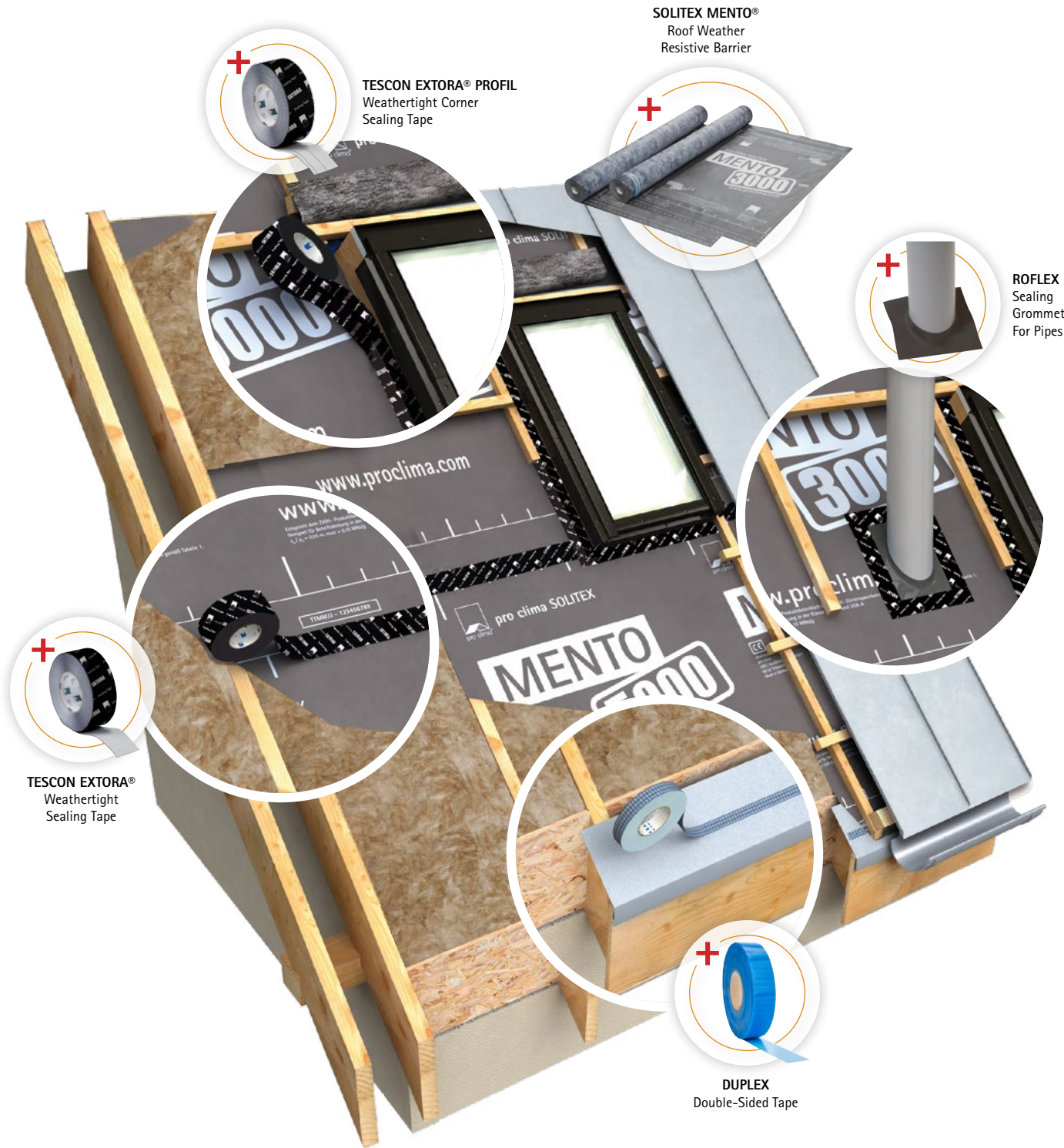
#### SOLITEX MENTO® 3000

Three-layer roof underlay  
90 days exposure, medium  
weight, very high wear-  
resistance, high resistance to  
driving rain, very high thermal  
stability.



Available in **-connect-** technology  
with two integrated  
self-adhesive strips

# SOLITEX MENTO® SYSTEM







## SOLITEX® UM connect

### Roof and Wall Weather Resistive Barrier

**APPLICATION:** SOLITEX® UM connect is a four-layered roofing underlay with a 3D separation layer and integrated self-adhesive strips for sheet joins. It is suitable for roofing such as titanium, zinc, stainless, galvanised steel and copper. It is also suitable as a weather resistive barrier for internal retrofit with existing direct-fix cladding to ensure a gap is maintained between new insulation and the internal side of existing wall cladding. See graphic below.

**ADVANTAGES:**

- ✓ High-performance monolithic nonporous membrane
- ✓ 3D separation layer provides ventilation between underlay
- ✓ Connect technology with two integrated self-adhesive strips
- ✓ High water resistance
- ✓ Low vapour resistance
- ✓ UV resistance up to 30 days

**SYSTEM PRODUCTS:**

TESCON EXTORA®; DUPLEX; ORCON® CLASSIC; KAFLEX; ROFLEX; TESCON® NAIDECK

ID CODE	LENGTH	WIDTH	AREA	KG/ROLL	QTY
13598	25 m	1.50 m	37.5 m²	15	1

**TECHNICAL DATA:**

Cover-fleece + protective-layer:	PP microfibre fleeces
Membrane:	monolithic TEEE film
Thickness:	8.0 ±0.5 mm
Moisture Vapour Transmission Resistance (MVTR):	0.25 MN.s/g
Surface weight:	450 ±10 g/m²
Temperature resistance:	-40 °C to +100 °C
Tensile strength MD/CD:	285 ±15 N/5 cm / ±15 N/5 cm



## 8mm SEPARATION MESH

### 3D Separation Mesh

**APPLICATION:** 8mm SEPARATION MESH is a 3D polypropylene mesh layer suitable for ventilated and unventilated structures. It can be used in combination with all SOLITEX® roof and wall underlays and with any type of roofing or façade material, such as titanium zinc, aluminium, stainless steel, galvanised steel, copper, etc. It is commonly used in wall insulation retrofit projects fitted from the inside to maintain a separation between cladding and new wall underlay.

ID CODE	LENGTH	WIDTH	AREA	KG/ROLL	QTY
1AR01832	30 m	1.4 m	42 m²	12.8	1

**ADVANTAGES:**

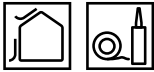
- ✓ 8mm separation layer provides increased acoustic insulation and ventilation between underlay and cladding
- ✓ Provides a ventilation and drainage path between the underlay cladding
- ✓ High thermal stability
- ✓ Can be exposed to UV for 90 days

**TECHNICAL DATA:**

Material:	Polypropylene 3D separation layer
Thickness:	8 mm
Reaction to fire:	E
Exposure time:	90 days
Temperature resistance:	-40 °C to +100 °C







# Adhesives, tapes and accessories for durable Weathertightness Systems



## TESCON **EXTORA**<sup>®</sup>

### Weathertight Sealing Tape

**APPLICATION:** TESCON EXTORA<sup>®</sup> weathertight sealing tape can be used to all Weather Resistive Barrier (WRB) systems. It is compatible with membranes, underlays, rigid sheathings, rigid wall underlays and rigid air barriers. TESCON EXTORA<sup>®</sup> is weathertight and vapour permeable. It is flexible, easy to cut, and has a simple-to-remove release paper, ensuring maximum productivity during installation. TESCON EXTORA<sup>®</sup> provides a wind tight and watertight adhesive seal to the substrate, forming weathertight connections under all conditions.

#### ADVANTAGES:

- ✓ Waterproof, weathertight sealing tape
- ✓ Fast application
- ✓ Suitable for NZ climate conditions
- ✓ Thin and flexible
- ✓ Can be applied to cold and damp surfaces
- ✓ Excellent UV resistance (180 days exposure)

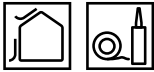
ID CODE	LENGTH	WIDTH	QTY
13206	30 m	60 mm	1
13486	30 m	60 mm	20 <b>big pack*</b>
13280	30 m	100 mm	1
14891	30 m	150 mm	1
14892	30 m	200 mm	1

#### TECHNICAL DATA:

Carrier material:	special fleece based on PP
Adhesive:	solid acrylic adhesive
Release material:	siliconized paper
Temperature resistance:	long term -40 °C to +90 °C
Installation temperature:	from -20 °C
UV stability and outdoor exposure:	180 days
Colour:	black
Storage:	cool and dry







## TESCON **EXTORA**® **PROFIL**

### Weathertight Corner Sealing Tape

**APPLICATION:** TESCOX EXTORA® PROFIL offers all the benefits of TESCOX EXTORA®, with an added split backing for ease of installation. It is a valuable component of Weather Resistive Barrier (WRB) systems requiring connections into corners of window and door installations or complicated junctions. It is compatible with all window materials: Aluminium, timber, uPVC and fibreglass. TESCOX EXTORA® PROFIL is weathertight and vapour permeable. It is flexible, easy to cut, and has a 12|23|25 mm split backing release paper, ensuring maximum productivity when things get complicated, can also be used internally. Internal use as a substitute for PEF rod and foam, or PEF rod and Wetseal. Tested to NZS4284:2008 achieving in excess of 4.85kPa.

#### ADVANTAGES:

- ✓ Excellent UV resistance (180 days exposure)
- ✓ Long-term durability
- ✓ Highly vapour permeable
- ✓ Outstanding adhesion on cold and/or wet surfaces
- ✓ Weathertight and airtight connections for windows and doors

ID CODE	LENGTH	WIDTH	QTY
15050	30 m	60 mm	1
15236	30 m	60 mm	20 <b>big pack*</b>

#### TECHNICAL DATA:

Carrier material:	special fleece based on PP
Adhesive:	solid acrylic adhesive
Release material:	siliconized paper
Temperature resistance:	long term -40 °C to +90 °C
Installation temperature:	from -20 °C
Colour:	black
Storage:	cool and dry
UV stability and outdoor exposure:	180 days



## TESCON **EXTOSEAL**®

### Sill Tape

**APPLICATION:** TESCOX EXTOSEAL® sill tape is a flexible flashing tape for use around framed joinery openings as part of flexible or rigid Weather Resistive Barrier (WRB) systems. TESCOX EXTOSEAL® provides a windtight and watertight adhesive seal to the substrate forming a weathertight sill to drain water safely to the outside.

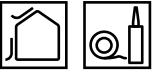
#### ADVANTAGES:

- ✓ Excellent UV resistance (180 days exposure)
- ✓ Long-term durability
- ✓ Self-sealing around nail and screw penetrations
- ✓ Excellent adhesive strength
- ✓ Weathertight & airtight component of your WRB

ID CODE	LENGTH	WIDTH	QTY
14152	20 m	150 mm	1
14156	20 m	200 mm	1
1AR04418	20 m	300 mm	1 <b>NEW</b>

#### TECHNICAL DATA:

Carrier material:	butyl rubber with PE film
Release material:	siliconized foil in individual strips: 97 / 53 (150mm) 147 / 53 (200mm)
Temperature resistance:	long term -30 °C to +90 °C
Installation temperature:	above -20 °C
Thickness:	1 mm
Colour:	black
Storage:	cool and dry
UV stability and outdoor exposure:	180 days







TESCON® **NAIDECK**

Double-Sided Self-Sealing Strip

**APPLICATION:** TESCON® NAIDECK is a double-sided self-sealing strip designed to seal fixing penetrations into purlins, battens, or studs. It can be fixed directly to your Weather Resistive Barrier (WRB). It is an essential part of low-slope roof systems. TESCON® NAIDECK is compatible with the pro clima SOLITEX MENTO® and SOLITEX EXTASANA® membranes, rigid sheathings, rigid wall underlays and rigid air barriers. TESCON® NAIDECK can also be used in façade applications behind purlins, façade clips, and mounts to ensure the ultimate windtight and watertight WRB at high wind pressures. It is easy to cut, and has a simple-to-remove release paper, ensuring maximum productivity during installation.

ADVANTAGES:

- ✓ Ultimate water resistance on low slope roofs
- ✓ Weathertight penetrations in WRB layers
- ✓ Self-sealing around nail and screw penetrations
- ✓ Reinforced for extra strength
- ✓ Double-sided adhesion for ease of install

ID CODE	LENGTH	WIDTH	QTY
13599	20 m	50 mm	1
1AR02150	20 m	50 mm	24 <b>big pack*</b>

TECHNICAL DATA:

Carrier material:	butyl rubber with PE film
Adhesive:	solid acrylic adhesive
Release material:	siliconized paper
Temperature resistance:	long term -20 °C to +80 °C
Installation temperature:	+5 °C to +35 °C
Thickness:	1 mm
Colour:	black
Storage:	cool and dry



ORCON® **CLASSIC**

Multi-Purpose Liquid Adhesive

**APPLICATION:** For connections to rough adjoining structural components or mineral surfaces.

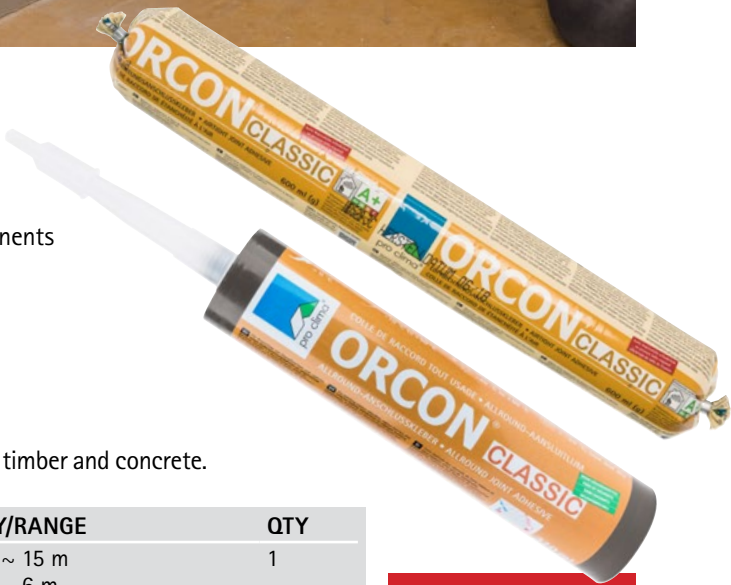
ADVANTAGES:

- ✓ Exceptionally high cohesion
- ✓ Elastic film
- ✓ Suitable for bonding of all pro clima membranes
- ✓ Promotes adhesion to rough adjoining components eg. rough-sawn timber and concrete.

ID CODE	PACKAGING	VOLUME	EFFICIENCY/RANGE	QTY
12769	cartridge	310 ml	bead 5 mm ~ 15 m bead 8 mm ~ 6 m	1
12770	sausage	600 ml	bead 5 mm ~ 30 m bead 8 mm ~ 12 m	1

TECHNICAL DATA:

Material:	non-ageing acrylate polymers without softeners or halogenated compounds
Installation temperature:	-10 °C to +50 °C (adhesive temp. >0 °C)
Temperature resistance:	long term -20 °C to +80 °C
Storage:	> -20 °C, cool and dry



NEW CARTRIDGES  
MADE FROM  
100% RECYCLED PLASTIC





# CONTEGA<sup>®</sup> EXO

## Exterior Joinery Connection Strip

**APPLICATION:** CONTEGA<sup>®</sup> EXO is designed for use as a weathertight connection around the exterior edge of windows and doors. It is a non-wicking, non-porous, flexible tape that is versatile for use in timber, masonry and concrete structures. CONTEGA<sup>®</sup> EXO has adaptable installation options, provided by three strips of adhesive, and can also be plastered or rendered over on the fleece side. It is vapour-permeable, ensuring your structure remains dry and durable.

**ADVANTAGES:**

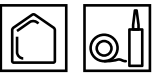
- ✓ Effective weathertight seal around windows and doors
- ✓ Outstanding adhesion on cold and/or wet surfaces
- ✓ Flexible to accommodate building movement
- ✓ Thin, highly pliable and easily formed around corners
- ✓ Weathertight connection for the life of the building



ID CODE	LENGTH	WIDTH	QTY
15844	30 m	85 mm	1
1AR01266	30 m	120 mm	1

**TECHNICAL DATA:**

Carrier material:	double-layer PP fleece and TEEE functional film
Release material:	silicone-coated PE film
Temperature resistance:	-40 °C to 90 °C
Installation temperature:	above -10 °C
Colour:	dark grey
Water column:	EN 20811 > 2,500 mm
Exposure time:	90 days
Storage:	cool and dry



# COMPEGO

## Exterior Joinery Connection Strip

**APPLICATION:** Flexible elastic tape with high adhesion strength. Use to permanently seal overlaps, joints and connections for vapour-closed products. Use cases: taping XPS Foam insulation boards, Polyethylene sheet (underslab DPM), Foil-faced vapour-tight insulation boards, steel-skinned SIP panels.

**ADVANTAGES:**

- ✓ 90 days of outdoor exposure
- ✓ For airtight sealing
- ✓ Water-resistant adhesive
- ✓ Lowest VOC rating in hazardous substance test. Tested according to ISO 16000

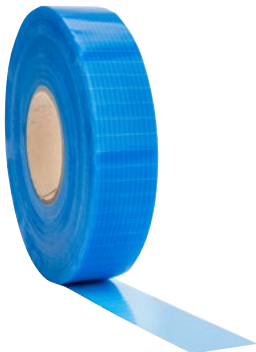
ID CODE	LENGTH	WIDTH	QTY
15357	25 m	60 mm	10
15385	25 m	100 mm	1
15386	25 m	150 mm	1

**TECHNICAL DATA:**

Backing:	elastic PE film
Adhesive:	solid acrylic adhesive
Release film:	siliconized paper
Colour:	white / blue
Exposure time:	90 days
Application temperature:	above -10 °C / 14 °F
Temperature resistance:	permanent -40 °C/-40 °F to +90 °C/194 °F
Storage:	cool and dry







# DUPLEX

Double-Sided Tape

**APPLICATION:** DUPLEX is an all-purpose double-sided tape, ideal for permanently bonding and sealing overlaps and end laps of Weather Resistive Barrier (WRB) membranes. It is also suitable for fixing SOLITEX EXTASANA® and SOLITEX MENTO® WRB membranes to steel structures before mechanical fastening. It is flexible, easy to cut, and has an easy to remove release paper, ensuring maximum productivity during installation. DUPLEX is reinforced with a scrim providing strength while allowing it to remain thin, avoiding thick layered material build ups while providing easy application.

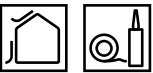
**ADVANTAGES:**

- ✓ Strong adhesion for maximum holding strength
- ✓ Double-sided for bonding and sealing layers
- ✓ Thin and flexible for easy application
- ✓ Can be applied to cold surfaces
- ✓ Reinforced for extra durability

ID CODE	LENGTH	WIDTH	QTY
1AR03913	80 m	25 mm	1

**TECHNICAL DATA:**

Carrier paper:	PP reinforcement
Release material:	siliconized paper
Temperature resistance:	long term from -40 °C to +90 °C
Application temperature:	over -10 °C
UV stability and outdoor exposure:	indoor and outdoor use without direct UV exposure
Colour:	blue
Storage:	cool and dry



# TESCON® PRIMER RP

Solvent-Free Primer

**APPLICATION:** TESCON® PRIMER RP is applied to porous substrates to prepare the surface for optimum adhesion of TESCON® VANA, TESCON® PROFIL, TESCON EXTORA®, TESCON EXTORA® PROFIL & TESCON EXTOSEAL®. Use TESCON® PRIMER RP to prime substrates such as timber flooring, concrete, masonry, fibre cement, plywood, oriented strand board (OSB), and other porous or friable surfaces prior to application of pro clima tapes.

**ADVANTAGES:**

- ✓ Adhesion promoter
- ✓ No drying required prior to application of tapes
- ✓ Deep penetration into the substrate
- ✓ Application on damp surfaces is possible
- ✓ Solvent free

ID CODE	CONTENTS	COVERAGE	QTY
11449	1000 ml	4.5m²	1

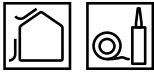
*The quantity used may vary depending on the substrate and application method.*

**TECHNICAL DATA:**

Carrier material:	acrylic copolymer, solvent-free
Colour:	white
Temperature resistance:	-40 °C to +90 °C
Installation temperature:	-10 °C to +45 °C
Storage:	cool and dry







## ROFLEX 20

Self-Adhesive Sealing Grommet for 1 Pipe or Cable, Ø 15 – 30 mm

**APPLICATION:** ROFLEX 20 is a sealing grommet ideally suited for quick and permanent airtight sealing of penetrations of cables and pipes. It is made of strong and flexible EPDM with an adhesive back and can be used inside to seal penetrations through the airtightness layer as well as outside for penetrations in the roof and wall underlays. Cables and pipes can be pulled and pushed without damaging the airtightness layer.

**ADVANTAGES:**

- ✓ Airtight & watertight for the life of the building
- ✓ High-quality EPDM with an adhesive back, extremely flexible and elastic
- ✓ Excellent UV exposure – up to 180 days

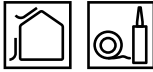
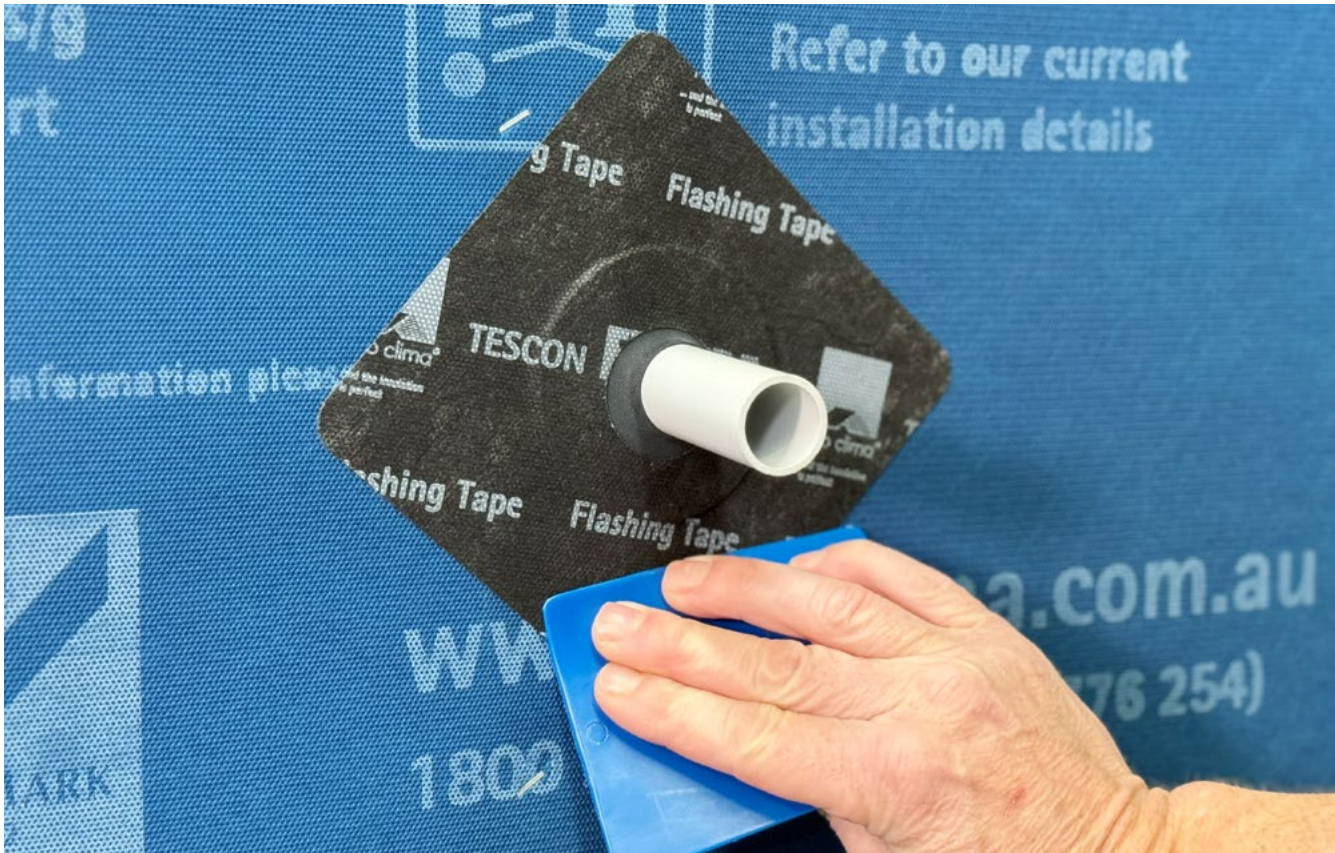
ID CODE	LENGTH	WIDTH	QTY
13605	145 mm	145 mm	5
13606	145 mm	145 mm	30 <b>big pack*</b>
15912	145 mm	145 mm	100 <b>jumbo pack*</b>

**\*big pack product only sold per unit.**

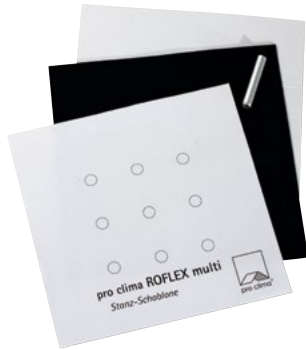
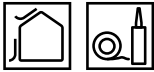
**\*jumbo pack product only sold per unit.**

**TECHNICAL DATA:**

Material:	TESCON EXTORA® Tape with EPDM
Temperature resistance:	-40 °C to +90 °C (EPDM)
Installation temperature:	over -10 °C
Storage:	cool and dry
UV stability and outdoor exposure:	180 days







# ROFLEX 20 multi

Sealing Grommet for up to 9 Pipes or Cables

**APPLICATION:** ROFLEX 20 multi is a sealing grommet for quick and permanent airtight sealing of up to 9 penetrations of conduit and pipes. Supplied with a hole punch. It is made of strong and flexible EPDM and can be used inside to seal penetrations through the airtightness layer as well as outside for penetrations in the roof and wall underlays. Conduit and pipes can be pulled and pushed without damaging the EPDM seal.

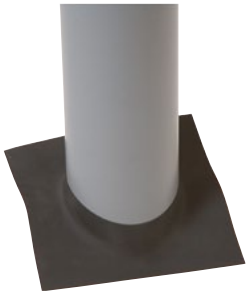
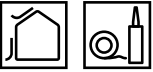
**ADVANTAGES:**

- ✓ Suitable for up to 9 penetrations in the airtightness layer, façades and roof underlays
- ✓ Airtight & watertight for the life of the building
- ✓ High-quality EPDM, extremely flexible and elastic
- ✓ Excellent UV exposure – up to 180 days
- ✓ Supplied with TESCON EXTORA® weathertight sealing tape for external and internal installation.
- ✓ TESCON EXTORA® tape included

ID CODE	LENGTH	WIDTH	QTY
12936	200 m	200 mm	2

**TECHNICAL DATA:**

Material:	EPDM
Temperature resistance:	from -40 °C to +90 °C
Installation temperature:	from -10 °C
Storage:	cool and dry
UV stability and outdoor exposure:	180 days



# ROFLEX 30/50/100/150/200/250/300

Sealing Grommets for Pipes

**APPLICATION:** Sealing grommets are suited for quick and permanent airtight sealing of pipes penetrations. They are made of strong and flexible EPDM and can be used inside to seal penetrations through the airtightness layer and outside for penetrations in the roof and wall underlays. Pipes can be pulled and pushed without damaging the EPDM seal.

**ADVANTAGES:**

- ✓ Airtight & watertight for the life of the building
- ✓ High-quality EPDM, extremely flexible and elastic
- ✓ Excellent UV exposure – up to 180 days
- ✓ Supplied with TESCON EXTORA® weathertight sealing tape for external and internal installation

**TECHNICAL DATA:**

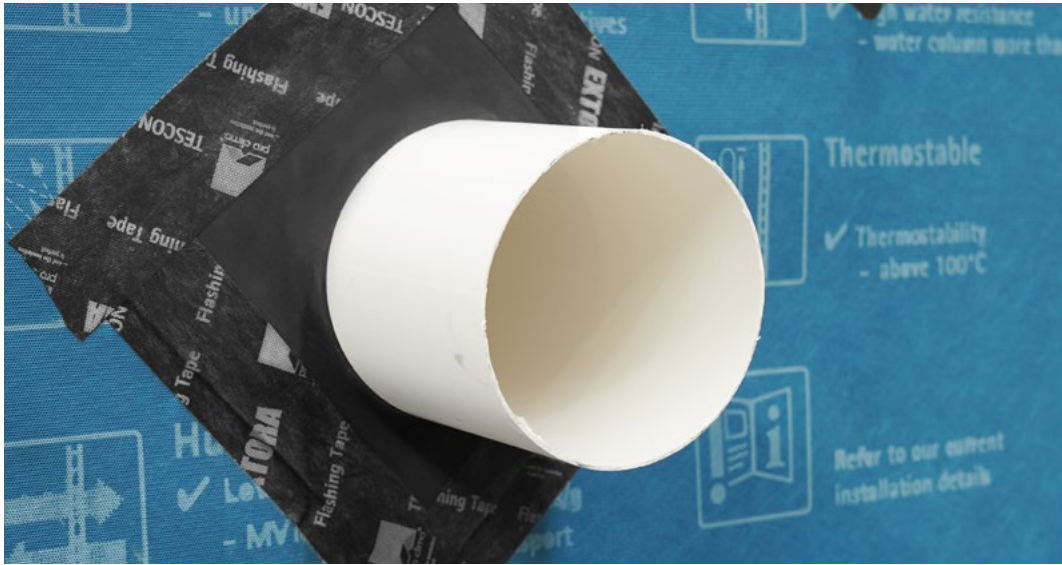
Material:	EPDM
Temperature resistance:	from -40 °C to +90 °C
Installation temperature:	over -10 °C
Storage:	cool and dry
UV stability and outdoor exposure:	180 days

PRODUCT	ID CODE	LENGTH	WIDTH	FOR DIAMETER	QTY
ROFLEX 30	16704	140 mm	140 mm	Ø 30-50 mm	2**
ROFLEX 30	16695	140 mm	140 mm	Ø 30-50 mm	20 big pack*
ROFLEX 30	1AR00149	140 mm	140 mm	Ø 30-50 mm	100 jumbo pack*
ROFLEX 50	13608	140 mm	140 mm	Ø 50-90 mm	2**
ROFLEX 50	13609	140 mm	140 mm	Ø 50-90 mm	20 big pack*
ROFLEX 50	11362	140 mm	140 mm	Ø 50-90 mm	100 jumbo pack*
ROFLEX 100	13610	200 mm	200 mm	Ø 100-120 mm	2**
ROFLEX 100	13613	200 mm	200 mm	Ø 100-120 mm	20 big pack*
ROFLEX 100	16331	200 mm	200 mm	Ø 100-120 mm	100 jumbo pack*
ROFLEX 150	13614	250 mm	250 mm	Ø 120-170 mm	2**
ROFLEX 150	1AR02201	250 mm	250 mm	Ø 120-170 mm	10 big pack*
ROFLEX 150	15908	250 mm	250 mm	Ø 120-170 mm	100 jumbo pack*
ROFLEX 200	13615	300 mm	300 mm	Ø 170-220 mm	2**
ROFLEX 200	13616	300 mm	300 mm	Ø 170-220 mm	20 big pack*
ROFLEX 250	13617	450 mm	450 mm	Ø 220-270 mm	2**
ROFLEX 300	13618	500 mm	500 mm	Ø 270-320 mm	2**

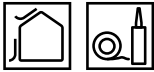
\*\* tape included

\*big pack product only sold per unit, tape not included.

\*jumbo pack product only sold per unit, tape not included.







## KAFLEX mono/duo

Self-Adhesive Cable Sealing Grommet for 1 or 2 Cables, Ø 5 – 12 mm

**APPLICATION:** An airtight and weathertight sealing grommet made of strong, flexible EPDM with adhesive back. KAFLEX is a beneficial component of all air barrier and weather-resistive barrier systems. It is compatible with membranes, underlays as well as rigid sheathings, rigid wall underlays and rigid air barriers. Strong, flexible, UV stable for up to 180 days and simple-to-remove release paper ensure maximum productivity during installation. Best suited for round cables.

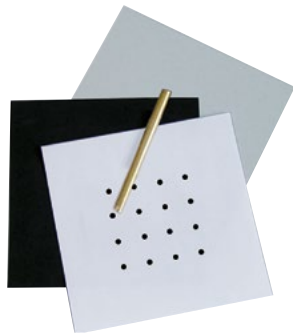
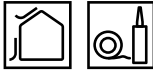
**ADVANTAGES:**

- ✓ Airtight & watertight for the life of the building
- ✓ High quality EPDM with adhesive back, extremely flexible and elastic
- ✓ Excellent UV exposure – up to 180 days
- ✓ Suitable for penetrations in façades, roof underlays and airtightness layers

PRODUCT	ID CODE	LENGTH	WIDTH	QTY
KAFLEX mono	13628	145 mm	145 mm	5
KAFLEX duo	13633	145 mm	145 mm	5
KAFLEX duo	13631	145 mm	145 mm	big pack* 30

**TECHNICAL DATA:**

Material:	TESCON EXTORA® Tape with EPDM
Temperature resistance:	-40 °C to +90 °C (EPDM)
Installation temperature:	over -10 °C
Storage:	cool and dry
UV stability and outdoor exposure:	180 days



## KAFLEX multi

Cable Sealing Grommet for up to 16 Cables, Ø 4.8 – 12 mm

**APPLICATION:** KAFLEX multi is an airtight, weathertight EPDM grommet designed to seal up to 16 cable penetrations in façade and roof linings. Flexible and UV stable for up to 180 days, KAFLEX is integral to all air and weather-resistant barrier systems. It is compatible with membranes, underlays, rigid sheathings, rigid wall underlays, and rigid air barriers. Supplied with tape and a hole punch.

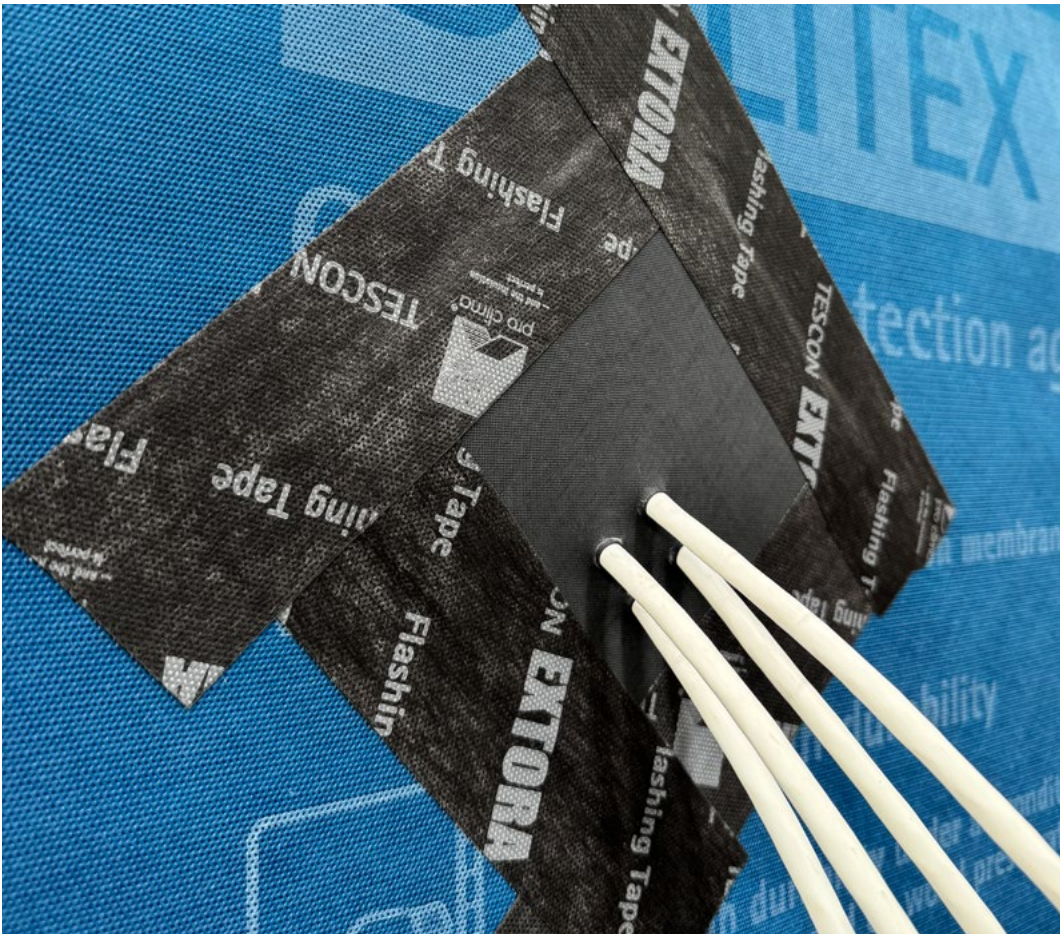
**ADVANTAGES:**

- ✓ Suitable for up to 16 cables
- ✓ Airtight & watertight for the life of the building
- ✓ High-quality EPDM, extremely flexible and elastic
- ✓ Excellent UV exposure – up to 180 days
- ✓ Supplied with TESCOX EXTORA® Weathertight sealing tape for external and internal installation

ID CODE	LENGTH	WIDTH	QTY
13630	140 mm	140 mm	2

**TECHNICAL DATA:**

Material:	EPDM
Temperature resistance:	from -40 °C to +90 °C
Installation temperature:	over -10 °C
Storage:	cool and dry
UV stability and outdoor exposure:	180 days



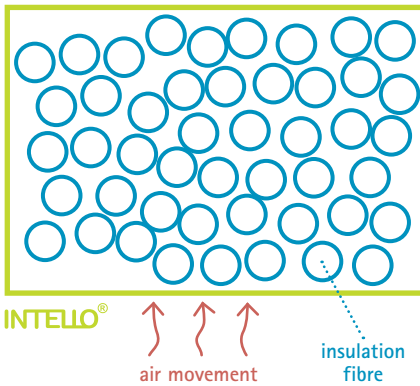
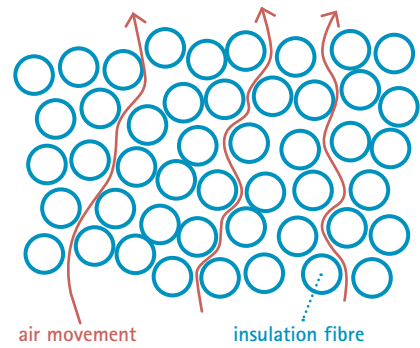


# INTERNAL AIRTIGHTNESS

INTELLIGENT AIR BARRIERS (IAB)







## What is airtightness?

An airtight building is one that has been designed and constructed to minimise the uncontrolled movement of air through the walls, roof, floor and joinery. Airtightness can be measured. This provides an indication of the quality and likely future performance of the building.

### WHY IS AIRTIGHTNESS IMPORTANT?

Uncontrolled airflow through the building structure drastically reduces the efficiency of insulation and will ultimately compromise the integrity of that insulation if moisture builds up within the wall cavity. Airtight building insulation ensures that energy is kept within your building rather than being wasted by escaping into the atmosphere.

### FRESH AIR AND AIRTIGHTNESS

Fresh air must always be supplied to the inside of a healthy building, and stale air should be extracted. This is independent of airtightness. Having air 'leaking' through cracks and permeable surfaces does not supply adequate or healthy air to the building's occupants.

### MOISTURE AND AIRTIGHTNESS

Airtight does not mean vapour tight. Successful airtight construction prevents free air movement while still allowing the flow of moisture as vapour. When designed and constructed well, the interior and the structure of an airtight building will stay dry.

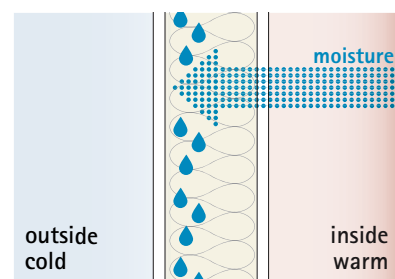
## Why is an intelligent airtightness system necessary in New Zealand?

New Zealand has a temperate maritime climate – there aren't the same seasonal extremes of temperatures as some countries – however most parts of the country have damp and/or humid conditions throughout the year.

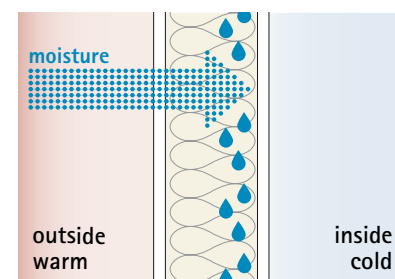
### STANDARD CONSTRUCTION METHOD

#### WATER VAPOUR (MOISTURE) MOVES THROUGH BUILDING STRUCTURES IN THE FOLLOWING WAYS:

1. air movement (convection)
2. diffusion through materials



Condensation in winter

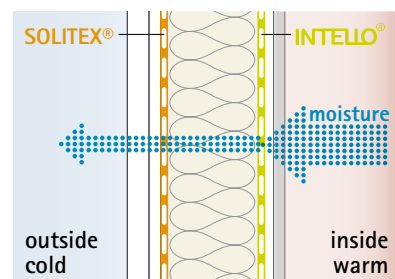


Condensation in summer

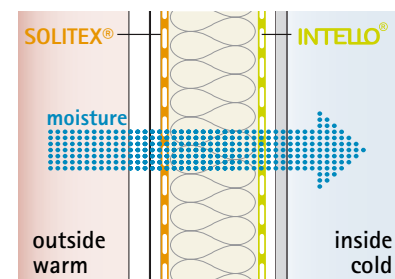
### HYDROSAFE CONSTRUCTION METHOD

#### IT IS IMPORTANT TO:

1. Control air movement through the building envelope
2. Protect structures from internally driven moisture
3. Allow structural drying on the inside



Intelligent moisture management in winter



Intelligent moisture management in summer

## Build Airtight

Airtightness testing of buildings is commonplace around the world, for very good reasons, and is becoming more so a requirement in New Zealand. Whether you do it for health, comfort, energy efficiency or durability, airtightness improves performance. By designing and constructing your building to be airtight, you're future proofing it in the best possible way.

### HEALTH

An airtight building is easy to keep warm and dry. When a building leaks air through infiltration, air carries heat and moisture with it, making it very hard to maintain healthy indoor conditions. In addition, moist air leaking through the walls, roofs and floors, promotes the growth of mould.

### DURABILITY

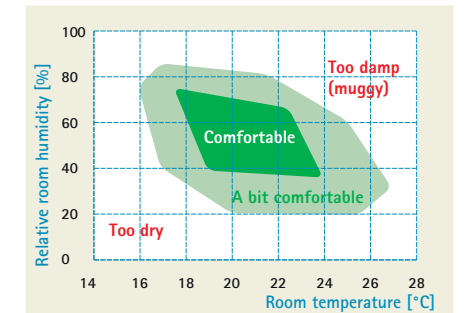
Dampness increases the rate of decay of all common building materials. Dry walls, roofs and floors are resilient and durable. Pro Clima's airtightness systems help prevent moisture from entering the structure of the building from the inside while facilitating the drying potential of the building elements, thus making building elements durable for the long term.

### COMFORT

Draughts are uncomfortable. So is being too cold, or too hot. An airtight building envelope eliminates unwanted draughts and provides much better control of internal temperature, making year-round comfort much easier to achieve.

### ...AND THE INSULATION IS PERFECT

Airtightness is the best way to ensure optimum energy efficiency of your building. Insulation works by trapping air. When building insulation is protected on both sides by intelligent air barrier membranes, air movement is stopped, and the insulation can do its job properly.



Comfort zone



## Benefits of airtightness and moisture control

### ENERGY EFFICIENCY

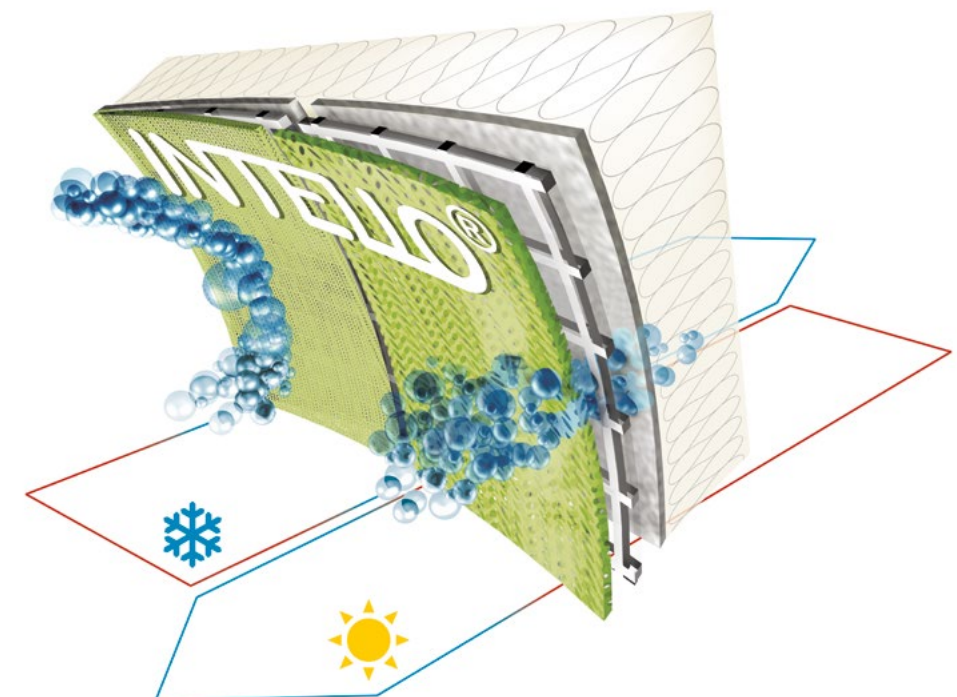
- ✓ Reduced air infiltration saves energy and therefore fewer heating / cooling appliances are needed
- ✓ Keeps your home warm in winter and cool in summer
- ✓ Reduce New Zealand's overall energy dependence

### FREEDOM FROM STRUCTURAL DAMAGE

- ✓ Prevents moisture build up in the construction
- ✓ High drying capacity through the intelligent INTELLO® membrane

### INDOOR AIR QUALITY

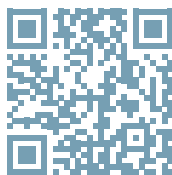
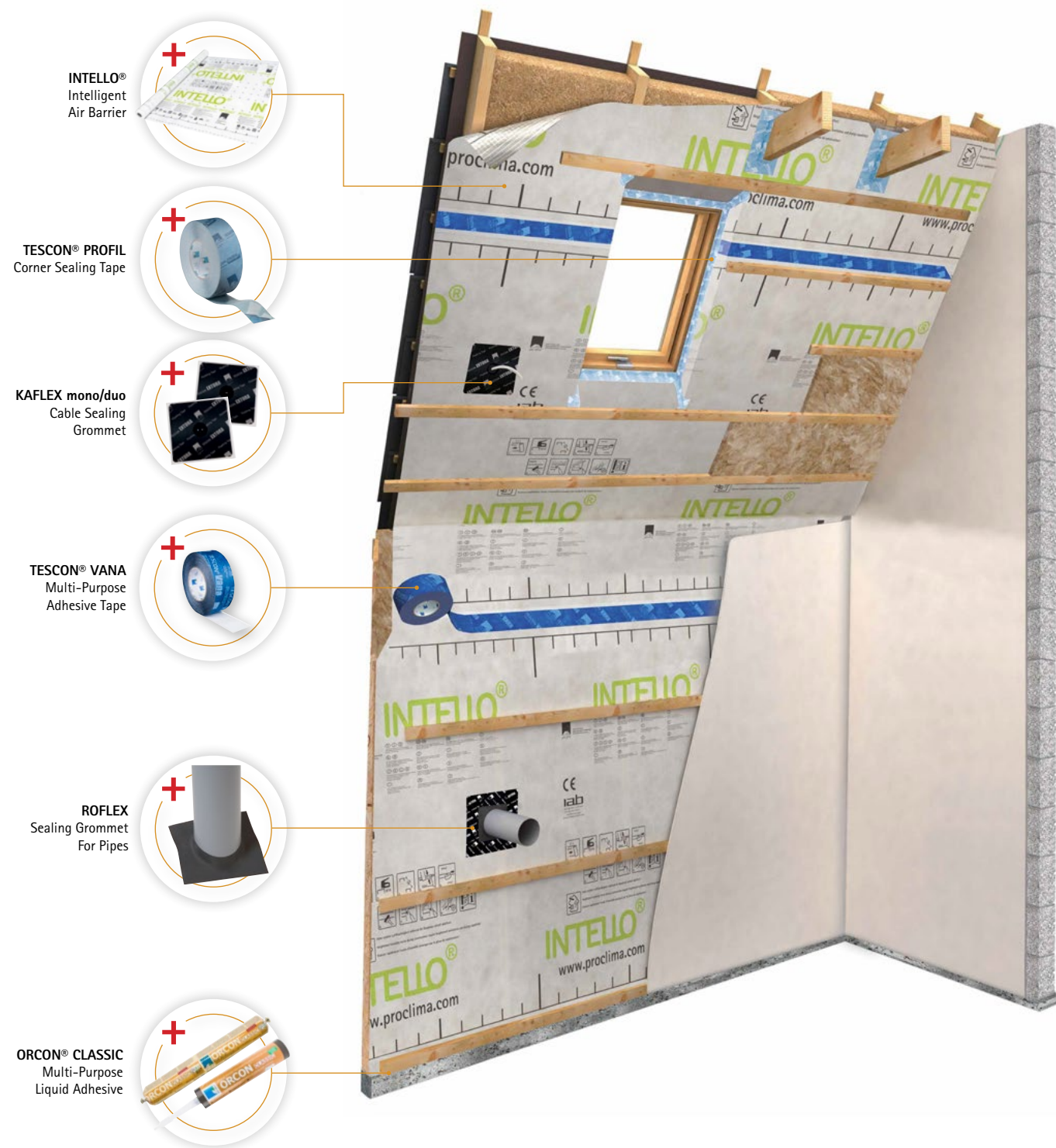
- ✓ Prevents mould and mildew in the construction from internally driven moisture
- ✓ Enables controlled ventilation







INTELLO® INTELLIGENT AIRTIGHTNESS SYSTEM



Benefits of Airtightness

Scan to go to website: <https://proclima.co.nz/airtightness/>



INTELLO® PLUS

Intelligent Air Barrier

**APPLICATION:** INTELLO® PLUS is a market-leading intelligent air barrier for all construction types, providing superior energy efficiency and moisture control. INTELLO® PLUS maximises the performance of your thermal insulation while restricting internal moisture entering the building envelope. INTELLO® PLUS is reinforced for strength and durability. Utilising Hydrosafe® technology, this intelligent air barrier is ideally suited to the New Zealand maritime climate. It provides optimal protection against structural damage and mould, even in the event of unexpected moisture intrusion.

ADVANTAGES:

- ✓ Promotes superior drying capacity with Hydrosafe® technology
- ✓ Intelligent Airtightness System (IAS) for warm, dry, healthy buildings
- ✓ Maximises the performance of thermal insulation
- ✓ Highly diffusion-resistant in winter
- ✓ Superior back-diffusion capacity in summer

SYSTEM PRODUCTS:

TESCON® VANA; TESCON® PROFIL; ORCON® CLASSIC; INTELLO® conneX; KAFLEX; ROFLEX; INSTAABOX; DUPLEX; CONTEGA® IQ, CONTEGA® PV

ID CODE	LENGTH	WIDTH	AREA	KG/ROLL	QTY
15468	20 m	1.50 m	30 m <sup>2</sup>	4	1
11367	50 m	1.50 m	75 m <sup>2</sup>	9	1
10077	50 m	3.00 m	150 m <sup>2</sup>	18	1

TECHNICAL DATA:

Fleece:	PP microfibre fleeces
Membrane:	polyethylene copolymer
Reinforcement:	PP
Thickness:	0.20 ±0.05 mm
MVTR-value mGTIN/humidity-variable:	40 MNs/g / 1.25 > 125 MNs/g
Surface weight:	110 ±15 g/m <sup>2</sup>
Temperature resistance:	-40 °C to +80 °C
Tensile strength MD/CD:	7.0 kN/m / 5.8 kN/m

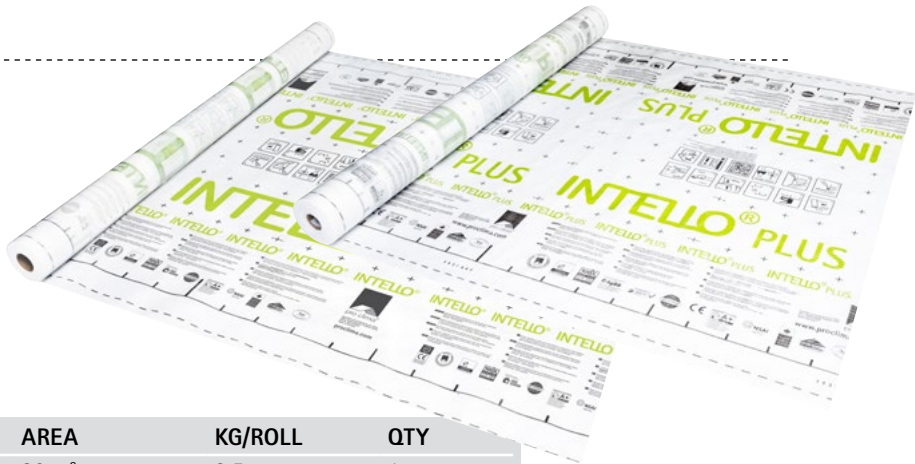
CE certification as per DIN EN 13984.

INTELLO®

Intelligent Air Barrier

**APPLICATION:** INTELLO® has all the function and performance of INTELLO® PLUS but without the reinforcing scrim. This makes it ideal for applications in prefabrication factories where little or no stress is placed on the product during installation.

ID CODE	LENGTH	WIDTH	AREA	KG/ROLL	QTY
15467	20 m	1.50 m	30 m <sup>2</sup>	3.5	1
13592	50 m	1.50 m	75 m <sup>2</sup>	7	1
10077	50 m	3.00 m	150 m <sup>2</sup>	14	1







Connection Strip for INTELLO® and INTELLO® PLUS

**APPLICATION:** INTELLO® conneX is a UV-stabilised humidity-variable strip that replaces the 'INTELLO® Connection strip. Installed during framing stage INTELLO conneX is designed to ensure the continuity of the INTELLO® and INTELLO® PLUS Intelligent Air Barrier (IAB) systems at framing junctions. Intended for use at intermediate floor junctions and internal to external wall junctions. It's strong and durable allowing up to 90 days of UV exposure prior to being covered by internal linings or external cladding.

ADVANTAGES:

- ✓ 90 days UV exposure during framing
- ✓ Optimum prevention of structural damage and mould, even in the event of unexpected moisture intrusion
- ✓ Extremely high humidity-variable diffusion resistance
- ✓ MVTR-value = 125 MNs/g in a winter climate;
- ✓ MVTR-value = 1.25 MNs/g back-diffusion capacity in summer

SYSTEM PRODUCTS:

TESCON® VANA; TESCON EXTORA®; ORCON® CLASSIC

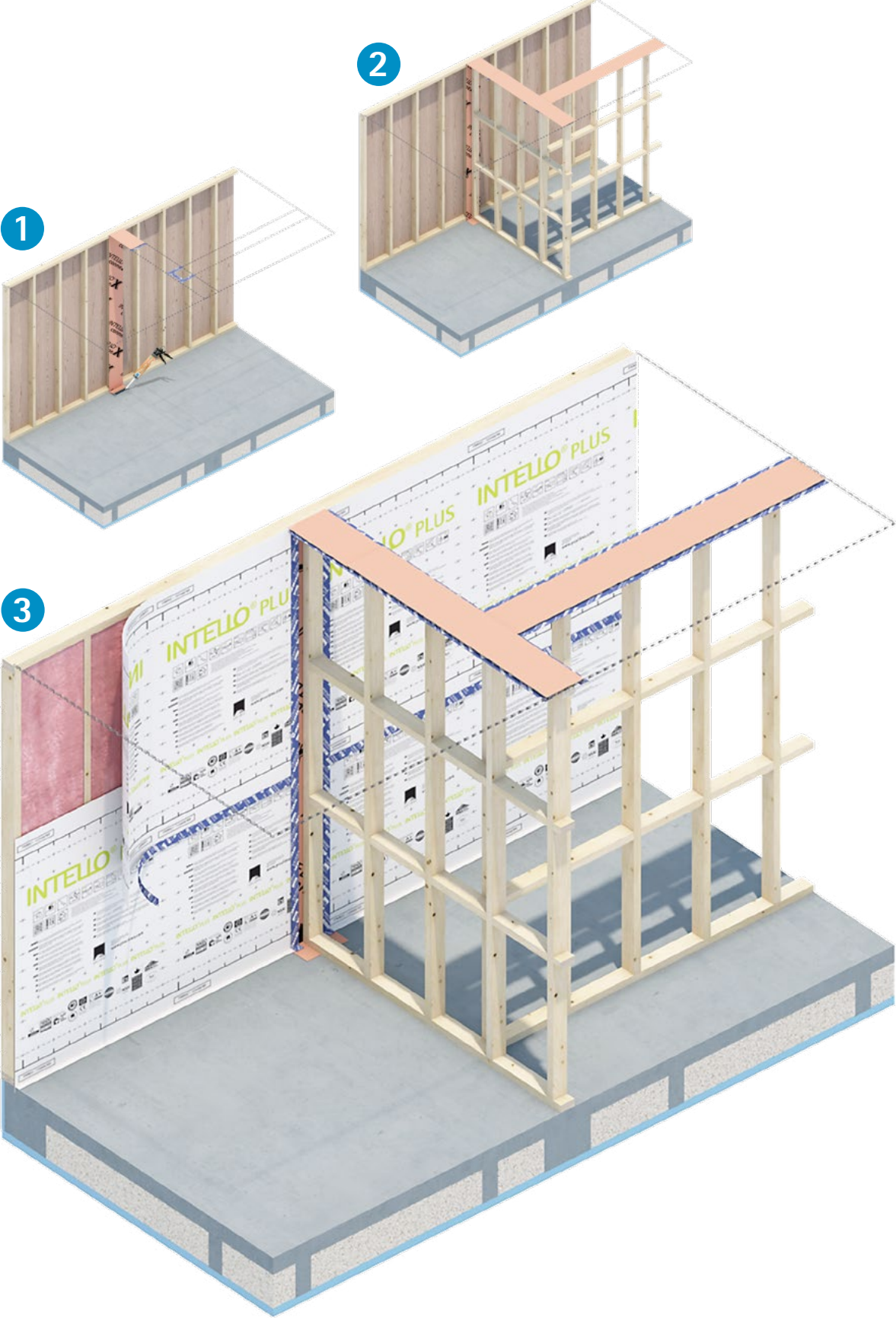
ID CODE	LENGTH	WIDTH	AREA	KG/ROLL	QTY
1AR02326	50 m	300 mm	15 m²	3.6	1
1AR03352	50 m	900 mm	45 m²	10.8	1

TECHNICAL DATA:

Fleece:	PP microfibre fleeces
Membrane:	PE copolymer
Thickness:	< 1 mm
Moisture Vapour Transmission Resistance (MVTR):	1.25 > 125 MNs/g
Temperature resistance:	-40 °C to +90 °C
UV stability and outdoor exposure:	90 days
Flammability index:	< 5
Surface weight:	300 ± 5g/m²



INTELLO® conneX APPLICATION







# Adhesives, tapes and accessories for durable Airtightness Systems



## TESCON® **Vana**

### Multi-Purpose Adhesive Tape

**APPLICATION:** TESCON® VANA airtight sealing tape is an essential component of all air barrier systems. It is compatible with membranes, underlays, as well as timber products, fibre cement, concrete & masonry. TESCON® VANA is airtight and vapour permeable. It is flexible, easy to cut, and has a simple-to-remove release paper, ensuring maximum productivity during installation. TESCON® VANA provides an airtight adhesive seal to the substrate, forming excellent seals under all application conditions.

### ADVANTAGES:

- ✓ Long-term durability (tested for 100-year adhesion)
- ✓ Flexible to account for building movement
- ✓ Outstanding adhesion on cold surfaces
- ✓ Thin, highly pliable
- ✓ Airtight connection for the life of the building

ID CODE	LENGTH	WIDTH	QTY
12185	30 m	60 mm	1
11365	30 m	60 mm	20 <b>big pack*</b>

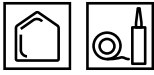
### TECHNICAL DATA:

Carrier material:	special fleece made from PP
Release material:	siliconized paper
Temperature resistance:	long term -40 °C to +90 °C
Installation temperature:	from -10 °C
UV stability and outdoor exposure:	indoor use only
Colour:	dark blue
Storage:	cool and dry



Declare.





# TESCON® PROFIL

## Corner Sealing Tape

**APPLICATION:** TESCON® PROFIL is specially designed for a secure and permanent airtight seal of junctions between INTELLO® Intelligent Air Barrier and window and door joinery. TESCON® PROFIL corner sealing tape is a valuable component of all air barrier systems. TESCON® PROFIL is airtight and vapour permeable. It is flexible, easy to cut, and has a simple-to-remove release paper, ensuring maximum productivity during installation. Use as a reliable and strong substitute for PEF rod and foam, or PEF rod and Wetseal. Tested to NZS4284:2008 achieving in excess of 4.85kPa.

### ADVANTAGES:

- ✓ Specially designed for corner applications
- ✓ Three individual removable strips of release paper
- ✓ Long-term durability
- ✓ Instant visual check of air seal, no drying time required
- ✓ Flexible to account for building movement

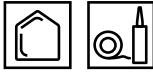
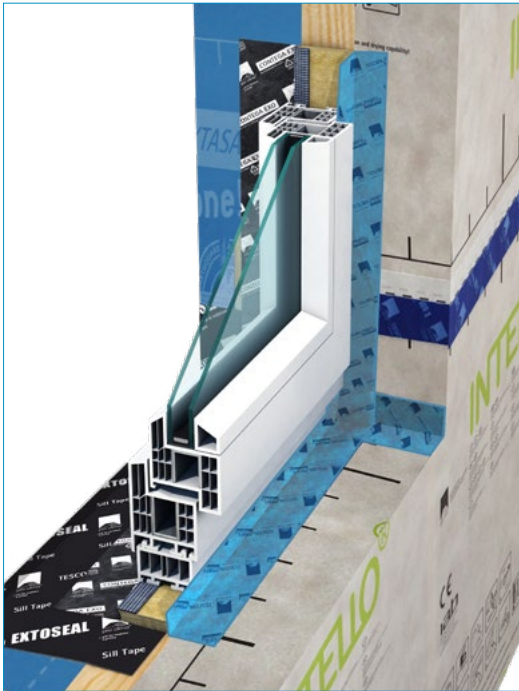
ID CODE	LENGTH	WIDTH	QTY
1AR02137	30 m	60 mm	1
11398	30 m	60 mm	20 <b>big pack*</b>

**\*big pack product only sold per unit.**

**\*jumbo pack product only sold per unit.**

### TECHNICAL DATA:

Carrier material:	special fleece made from PP
Release material:	siliconized paper in individual strips: 12 / 23 / 25 mm
Temperature resistance:	long term from -40 °C to +90 °C
Installation temperature:	over -10 °C
UV stability and outdoor exposure:	indoor use only
Colour:	light blue
Storage:	cool and dry



# ORCON® CLASSIC

**APPLICATION:** For connections to rough adjoining structural components or mineral surfaces.

### ADVANTAGES:

- ✓ Exceptionally high cohesion
- ✓ Elastic film
- ✓ Suitable for bonding of all pro clima membranes
- ✓ Outstanding adhesion to rough adjoining structural components or mineral surfaces

ID CODE	PACKAGING	VOLUME	EFFICIENCY/RANGE	QTY
12769	cartridge	310 ml	bead 5 mm ~ 15 m bead 8 mm ~ 6 m	1
12770	sausage	600 ml	bead 5 mm ~ 30 m bead 8 mm ~ 12 m	1

### TECHNICAL DATA:

Material:	non-ageing acrylate polymers without softeners or halogenated compounds
Installation temperature:	-10 °C to +50 °C (adhesive temp. >0 °C)
Temperature resistance:	long term -20 °C to +80 °C
Storage:	> -20 °C, cool and dry



**NEW CARTRIDGES  
MADE FROM  
100% RECYCLED PLASTIC**







For timber frame construction with 2 self-adhesive strips



For masonry construction with 1 self-adhesive strip

# CONTEGA<sup>®</sup>10

## Interior Joinery Connection Strip

**APPLICATION:** Interior use for airtight joints between window and door joinery and internal airtightness layer eg. INTELLO<sup>®</sup>, plywood, OSB, ICF block, masonry block. The tape has an in-built expansion baffle to allow for relative movement between components.

**ADVANTAGES:**

- ✓ Effective airtight seal around windows and doors
- ✓ Outstanding adhesion on cold and/or wet surfaces
- ✓ Thin, highly pliable and easily formed around corners
- ✓ Flexible and expandable to accommodate building movement
- ✓ Airtight connection for the life of the building

PRODUCT	ID CODE	LENGTH	WIDTH	QTY
1 self-adhesive strip (For masonry construction)	14897	30 m	90 mm	1
2 self-adhesive strips (For timber frame construction)	14896	30 m	90 mm	1

**TECHNICAL DATA:**

Carrier material:	PP fleece and special PP copolymer membrane
Temperature resistance:	from -40 °C to +90 °C
Installation temperature:	above -10 °C
Storage:	cool and dry



Can be plastered over

# CONTEGA<sup>®</sup>PV

## Render Connection Strip

**APPLICATION:** CONTEGA<sup>®</sup> PV is an interior connection strip designed to create airtight junctions between plastered or rendered surfaces and adjoining or penetrating structural elements. It is an essential product for transitions between masonry assemblies and common building elements. Suitable to connect interior masonry reveals to window and door joinery; penetrations by beams, columns and joists in masonry; and transitions from INTELLO<sup>®</sup> PLUS to masonry construction. The mesh can be embedded into render and the fleece may be plastered or rendered over for a complete durable air barrier system.

**ADVANTAGES:**

- ✓ Effective air barrier transitions in common challenging situations
- ✓ Joins airtight render to INTELLO<sup>®</sup> PLUS
- ✓ Fleece side can be plastered or rendered in place
- ✓ Provides strong and durable plaster and render joints
- ✓ Airtight connection for the life of the building

ID CODE	LENGTH	WIDTH	QTY
15840	15 m	200 mm	1

**TECHNICAL DATA:**

Carrier material:	PET fleece with functional membrane and plaster reinforcement
Release material:	silicone-coated PE film
Temperature resistance:	long term -40 °C to +90 °C
Installation temperature:	above -10 °C
Colour:	light blue / dark blue
Storage:	cool and dry







# INSTAABOX

Installation Box

**APPLICATION:** INSTAABOX allows for the airtight installation of electrical flush boxes for wall systems without a service cavity. It is attached and sealed to the intelligent airtightness barrier INTELLO®.

**ADVANTAGES:**

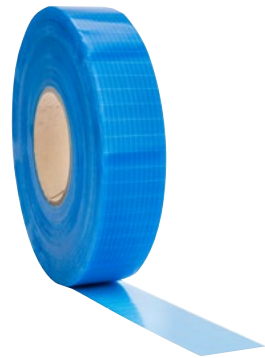
- ✓ Installation box for airtightness systems without a service cavity
- ✓ Provides space for up to three flush boxes
- ✓ Pre-pressed exit points for cables

ID CODE	QTY
1AR02160	10 <span>big pack*</span>

\*big pack product only sold per unit.

**TECHNICAL DATA:**

Material:	polyethylene, flexible
Temperature resistance:	-10 °C to +80 °C
Cable diameter:	max. 20 mm
Depth:	55 mm
Length / width installation space / opening:	260 mm / 130 mm
Length / width overall:	320 mm / 190 mm



# DUPLEX

Double-Sided Tape

**APPLICATION:** DUPLEX is an all-purpose double-sided tape, ideal for permanently bonding and sealing overlaps and end laps of Intelligent Air Barriers (IAB) membranes. It is also suitable for temporarily fixing INTELLO® air barrier membrane to steel structures before mechanical fastening. It is flexible, easy to cut, and has a simple to remove release paper, ensuring maximum productivity during installation. DUPLEX is reinforced with a mesh, allowing it to remain thin, avoiding thick layered material build-ups while providing easy application.

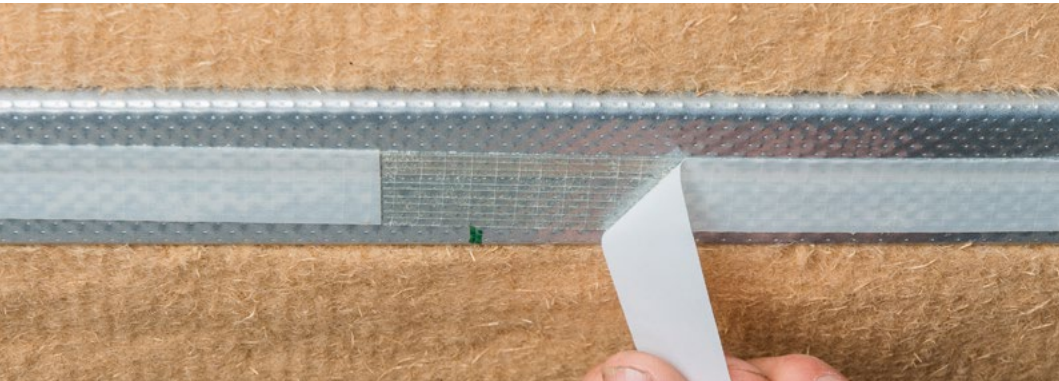
**ADVANTAGES:**

- ✓ Strong adhesion for maximum holding strength
- ✓ Double-sided for bonding and sealing layers
- ✓ Thin and flexible for easy application
- ✓ Can be applied to cold surfaces
- ✓ Reinforced for extra durability

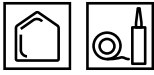
ID CODE	LENGTH	WIDTH	QTY
1AR03913	80 m	25 mm	1

**TECHNICAL DATA:**

Carrier paper:	PP reinforcement
Release material:	siliconized paper
Temperature resistance:	long term from -40 °C to +90 °C
Application temperature:	over -10 °C
UV stability and outdoor exposure:	indoor and outdoor use without direct UV exposure
Colour:	blue
Storage:	cool and dry







## KAFLEX mono/duo

Cable Sealing Grommet for 1 or 2 Cables, Ø 5 – 12 mm each

**APPLICATION:** An airtight and weathertight sealing grommet made of strong, flexible EPDM with an integrated adhesive flange. KAFLEX is a beneficial component of all air barrier and weather-resistive barrier systems. It is compatible with membranes, underlays as well as rigid sheathings, rigid wall underlays and rigid air barriers. Strong, flexible, UV stable for up to 180 days. Simple-to-remove release paper ensures maximum productivity during installation.

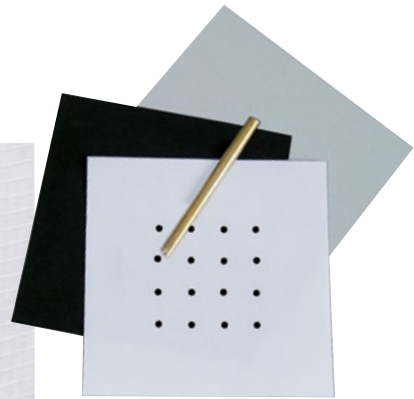
**ADVANTAGES:**

- ✓ Airtight & watertight for the life of the building
- ✓ High quality EPDM, extremely flexible and elastic
- ✓ Excellent UV exposure – up to 180 days
- ✓ Long-term durability
- ✓ Supplied with TESCON EXTORA® Weathertight sealing tape for external and internal installation

PRODUCT	ID CODE	LENGTH	WIDTH	QTY
KAFLEX mono	13628	145 mm	145 mm	5
KAFLEX duo	13633	145 mm	145 mm	5
KAFLEX duo	13631	145 mm	145 mm	big pack* 30

**TECHNICAL DATA:**

Material:	EXTORA Tape with EPDM
Temperature resistance:	-40 °C to +90 °C (EPDM)
Installation temperature:	over -10 °C
Storage:	cool and dry
UV stability and outdoor exposure:	180 days



## KAFLEX multi

Cable Sealing Grommet for up to 16 Cables, Ø 4.8 – 12 mm each

**APPLICATION:** KAFLEX multi is an airtight, weathertight EPDM grommet designed to seal up to 16 cable penetrations in façade and roof linings. Flexible and UV stable for up to 180 days, KAFLEX is integral to all air and weather-resistant barrier systems. It is compatible with membranes, underlays, rigid sheathings, rigid wall underlays, and rigid air barriers.

**ADVANTAGES:**

- ✓ Suitable for up to 16 penetrations in façades and roof linings
- ✓ Airtight & watertight for the life of the building
- ✓ High-quality EPDM, extremely flexible and elastic
- ✓ Supplied with TESCON EXTORA® weathertight sealing tape for external and internal installation.
- ✓ Long-term durability



ID CODE	LENGTH	WIDTH	QTY
13630	140 mm	140 mm	2

**TECHNICAL DATA:**

Material:	EPDM
Temperature resistance:	from -40 °C to +90 °C
Installation temperature:	over -10 °C
Storage:	cool and dry

Internal use only.

## KAFLEX post

Cable Sealing Grommet for Already Installed Cables

**APPLICATION:** KAFLEX post can be used to provide a durable seal to an installed cable that is already connected. Can be used in combination with internal membranes.

**ADVANTAGES:**

- ✓ Create airtight seals around cables that are already in place
- ✓ Simple, fast and secure application
- ✓ Airtight for the life of the building

ID CODE	LENGTH	WIDTH	QTY
13635	140 mm	140 mm	5

**TECHNICAL DATA:**

Material:	special fleece made from PP
Release paper:	siliconized paper
Temperature resistance:	long term -40 °C to +90 °C
Application temperature:	from -10 °C







## ROFLEX 20

Sealing Grommet for 1 Pipe or Conduit, Ø 15 – 30 mm

**APPLICATION:** ROFLEX 20 is a sealing grommet ideally suited for quick and permanent airtight sealing of penetrations of conduit and pipes. It is made of strong and flexible EPDM and can be used inside to seal penetrations through the airtightness layer as well as outside for penetrations in the roof and wall underlays. Conduits and pipes can be pulled and pushed without damaging the airtightness layer.

**ADVANTAGES:**

- ✓ Airtight & watertight for the life of the building
- ✓ High-quality EPDM, extremely flexible and elastic
- ✓ Excellent UV exposure – up to 180 days

ID CODE	LENGTH	WIDTH	QTY
13605	145 mm	145 mm	5
13606	145 mm	145 mm	30 <b>big pack*</b>
15912	145 mm	145 mm	100 <b>jumbo pack*</b>

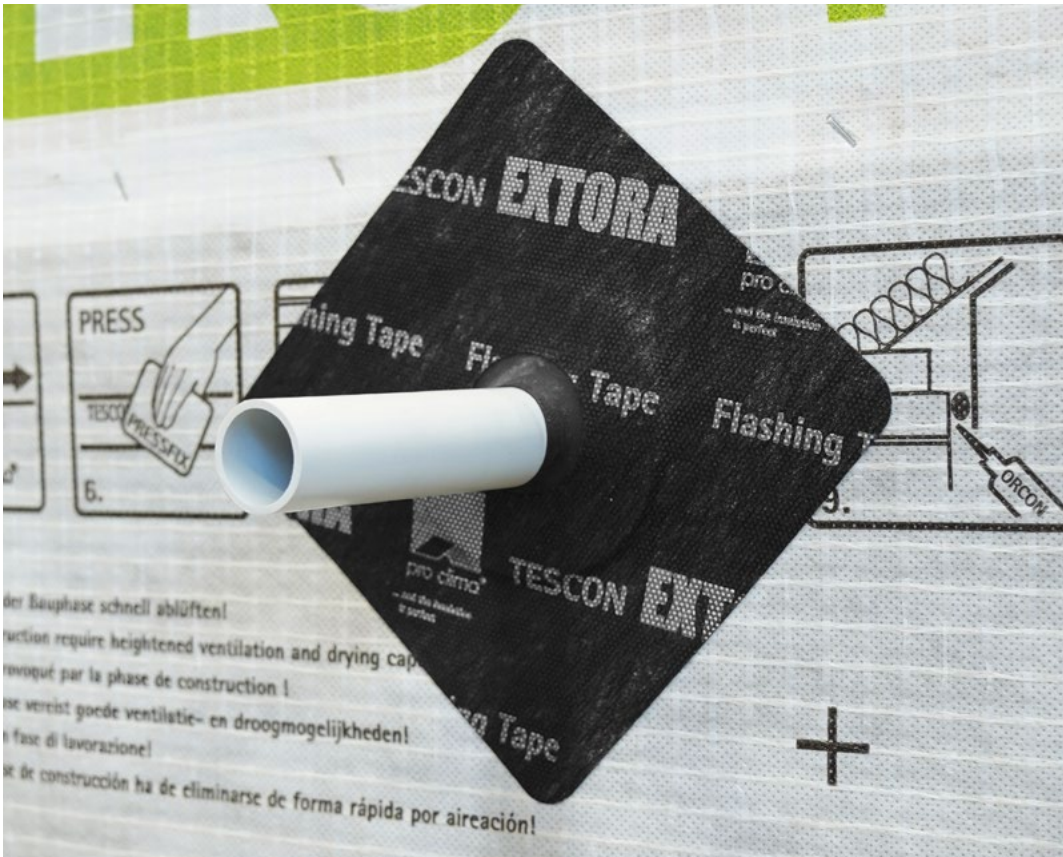
NOT included for Jumbo packs

**\*big pack product only sold per unit.**

**\*jumbo pack product only sold per unit.**

**TECHNICAL DATA:**

Material:	TESCON EXTORA® Tape with EPDM
Temperature resistance:	-40 °C to +90 °C (EPDM)
Installation temperature:	over -10 °C
Storage:	cool and dry
UV stability and outdoor exposure:	180 days



## ROFLEX 20 multi

Sealing Grommet for up to 9 Pipes or Cables

**APPLICATION:** ROFLEX 20 multi is a sealing grommet ideally suited for quick and permanent airtight sealing of up to 9 penetrations of cables and pipes. It is made of strong and flexible EPDM and can be used inside to seal penetrations through the airtightness layer as well as outside for penetrations in the roof and wall underlays. Conduits and pipes can be pulled and pushed without damaging the airtightness layer.

**ADVANTAGES:**

- ✓ Suitable for up to 9 penetrations in the airtightness layer, façades and roof underlays
- ✓ Airtight & watertight for the life of the building
- ✓ High-quality EPDM, extremely flexible and elastic
- ✓ Supplied with TESCOX EXTORA® weathertight sealing tape for external and internal installation

ID CODE	LENGTH	WIDTH	QTY
12936	200 m	200 mm	2

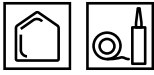
Tape included

**TECHNICAL DATA:**

Material:	EPDM
Temperature resistance:	from -40 °C to +90 °C
Installation temperature:	from -10 °C
Storage:	cool and dry







# ROFLEX 30/50/100/150/200/250/300

## Sealing Grommets for Pipes

**APPLICATION:** Sealing grommets are suited for quick and permanent airtight sealing of pipes' penetrations. They are made of strong and flexible EPDM and can be used inside to seal penetrations through the airtightness layer and outside for penetrations in the roof and wall underlays. Pipes can be pulled and pushed without damaging the airtightness layer.

### ADVANTAGES:

- ✓ Airtight & watertight for the life of the building
- ✓ Ideal for sealing pipe penetrations
- ✓ High-quality EPDM, extremely flexible and elastic
- ✓ Supplied with TESCON EXTORA® Weathertight sealing tape for external and internal installation

PRODUCT	ID CODE	LENGTH	WIDTH	FOR DIAMETER	QTY
ROFLEX 30	16704	140 mm	140 mm	Ø 30-50 mm	2**
ROFLEX 30	16695	140 mm	140 mm	Ø 30-50 mm	20 <b>big pack*</b>
ROFLEX 30	1AR00149	140 mm	140 mm	Ø 30-50 mm	100 <b>jumbo pack*</b>
ROFLEX 50	13608	140 mm	140 mm	Ø 50-90 mm	2**
ROFLEX 50	13609	140 mm	140 mm	Ø 50-90 mm	20 <b>big pack*</b>
ROFLEX 50	11362	140 mm	140 mm	Ø 50-90 mm	100 <b>jumbo pack*</b>
ROFLEX 100	13610	200 mm	200 mm	Ø 100-120 mm	2**
ROFLEX 100	13613	200 mm	200 mm	Ø 100-120 mm	20 <b>big pack*</b>
ROFLEX 100	16331	200 mm	200 mm	Ø 100-120 mm	100 <b>jumbo pack*</b>
ROFLEX 150	13614	250 mm	250 mm	Ø 120-170 mm	2**
ROFLEX 150	1AR02201	250 mm	250 mm	Ø 120-170 mm	10 <b>big pack*</b>
ROFLEX 150	15908	250 mm	250 mm	Ø 120-170 mm	100 <b>jumbo pack*</b>
ROFLEX 200	13615	300 mm	300 mm	Ø 170-220 mm	2**
ROFLEX 200	13616	300 mm	300 mm	Ø 170-220 mm	20 <b>big pack*</b>
ROFLEX 250	13617	450 mm	450 mm	Ø 220-270 mm	2**
ROFLEX 300	13618	500 mm	500 mm	Ø 270-320 mm	2**

\*\* tape included

**\*big pack product only sold per unit, tape not included.**

**\*jumbo pack product only sold per unit, tape not included.**

### TECHNICAL DATA:

Material:	EPDM
Temperature resistance:	from -40 °C to +90 °C
Installation temperature:	over -10 °C
Storage:	cool and dry







## DASATOP®

### Retrofit Vapour Control Layer

**APPLICATION:** DASATOP® is an air-resistive barrier for installation over rafters and across sarking in roof renovation projects. The DASATOP® air and vapour control layer system has been specially developed for roof restoration and is installed from the outside over existing rafters, sarking boards, or structures. DASATOP® protects structures from rain wetting during construction while cladding is removed.

#### ADVANTAGES:

- ✓ Airtightness installed from the outside
- ✓ Specifically developed for roof restoration
- ✓ Humidity-variable MVTR
- ✓ No additional airtight joints are required at the rafters
- ✓ High tear resistance due to fleece reinforcement

#### SYSTEM PRODUCTS:

TESCON EXTORA®; TESCON EXTORA® PROFIL; ORCON® CLASSIC; KAFLEX; ROFLEX; CONTEGA® PV

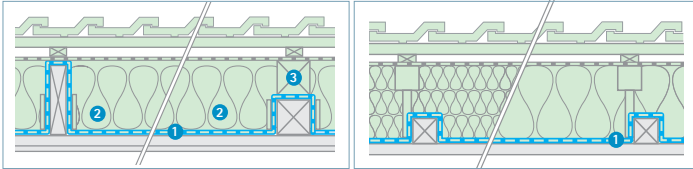
ID CODE	LENGTH	WIDTH	AREA	KG/ROLL	QTY
10094	50 m	1.50 m	75 m²	7	1

#### TECHNICAL DATA:

Carrier:	PP fleece
Membrane:	Polyethylene copolymer
s <sub>a</sub> -value:	0.05 - 2 m
Colour:	Green
Surface weight:	90 ±5 g/m²
MVTR-value:	8 ±1.25 MNs/g
MVTR humidity-variable range:	0.25 - 10 MNs/g
Water column:	> 1,500 mm
Temperature resistance:	-40 °C to 80 °C

CE certification as per DIN EN 13984.

#### EXTERNAL INSTALLATION OF VAPOUR CONTROL LAYER FOR TOP AND BOTTOM OF RAFTER



- 1 DASATOP® airtight membrane
- 2 Position held by DASATOP® FIX
- 3 Frame



## DASATOP® FIX

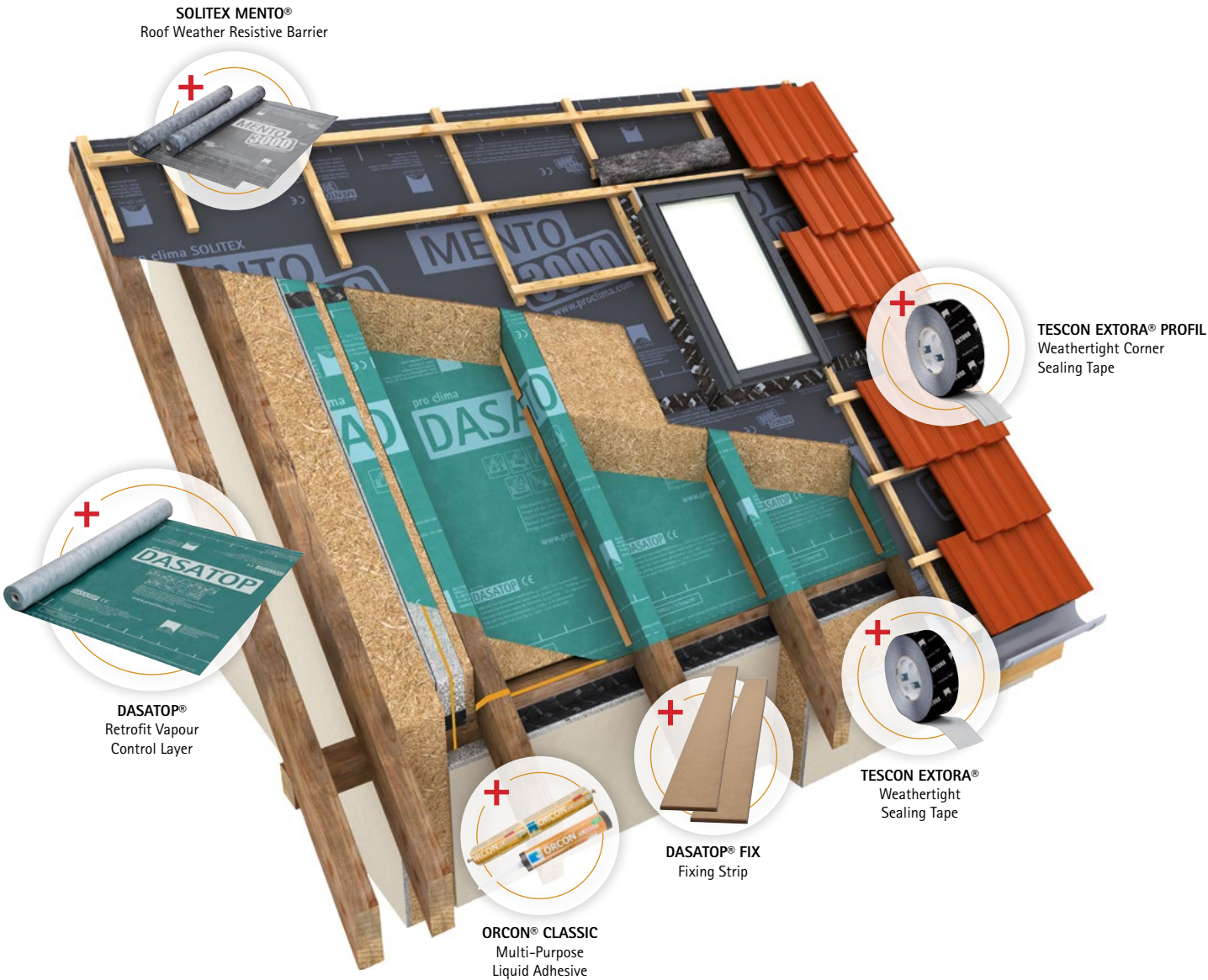
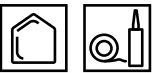
### Fixing Strip

**APPLICATION:** DASATOP® FIX board is used to secure installed retrofit vapour control layer DASATOP® around existing rafters.

ID CODE	KG	QTY
15435	5	50pc

#### TECHNICAL DATA:

Material:	MDF/HDF fibreboard (E1 standard)
Length:	1 m
Width:	40 mm
Thickness:	3 mm
Storage:	Cool and dry







# AEROSANA® VISCONN

Sprayable Airtightness Sealant with a Humidity-Variable MTVR

**APPLICATION:** For use as a humidity-variable vapour control and airtight layer that can be applied as a spray or with a brush. It is suitable for wall, ceiling, and floor surface applications, such as non-plastered masonry or porous panel-form materials. AEROSANA® VISCONN can also be used for creating joints to components such as windows, roofs, walls, ceilings, and floors. Use on the interior and exterior of building components due to the product's humidity-variable diffusion resistance. Once dried, the sprayed-on liquid film forms a seamless, elastic, airtight, and vapour-checking protective layer. It sticks to all standard construction materials, pro clima membranes and membranes made from aluminium and paper. Sprays on blue, dries black.

**ADVANTAGES:**

- ✓ Sprayable airtightness sealant with a humidity-variable MVTR
- ✓ Reliable structures thanks to excellent adhesive properties
- ✓ Can be plastered/painted over
- ✓ Suitable for application in indoor and protected outdoor areas, thanks to its humidity-variable MVTR
- ✓ Lowest VOC rating in hazardous substance test

PRODUCT	ID CODE	CONTENT	COVERAGE	QTY
AEROSANA® VISCONN	1AR01106	10 L	750 g/m <sup>2</sup>	1
AEROSANA® VISCONN WHITE	1AR01740	10 L	750 g/m <sup>2</sup>	1
AEROSANA® VISCONN	1AR02612	600 ml	750 g/m <sup>2</sup>	1
AEROSANA® VISCONN WHITE	1AR02749	600 ml	750 g/m <sup>2</sup>	1

**TECHNICAL DATA:**

Material:	Aqueous acrylic dispersion
Surface weight:	approx. 200 g/m <sup>2</sup> (dried), depending on subsurface and applied thickness
Vapour resistance (MVTR):	30 ±3 MNs/g (at 0.3 mm thickness)
s <sub>d</sub> -value:	6 ±0.6 m (at 0.3 mm thickness)
s <sub>d</sub> -value humidity-variable:	0.13 - 10.00 m
Water column:	2,000 mm
Application temperature:	5 °C to 60 °C
Temperature resistance:	permanent -40 °C to 90 °C (dried)
Coverage:	approx. 750 g/m <sup>2</sup> , depending on applied thickness; 1 L ≈ 1 kg
Drying:	approx. 6 - 48 hours (at 20 °C, 65% rel. humidity) depending on subsurface and applied thickness
Storage:	5 °C - 25 °C, in a closed, airtight bucket



# AEROSANA® VISCONN FIBRE

Fibre-Reinforced Sealant with a Humidity-Variable s<sub>d</sub>-value

**APPLICATION:** AEROSANA® VISCONN FIBRE is a brush-on, elastic and humidity-variable vapour control layer. AEROSANA® VISCONN FIBRE creates an airtightness layer for sealing porous surfaces, penetrations and joints. Thanks to the fibre reinforcement, joints and cracks of up to 20mm can be covered. Use AEROSANA® FLEECE for larger joints. Can be sprayed from sausage using AEROFIXX Gun.

**ADVANTAGES:**

- ✓ Excellent adhesion to most construction surfaces
- ✓ Covers cracks and joints of up to 20mm width
- ✓ Larger joints can be covered in combination with AEROSANA® FLEECE
- ✓ Can be used flexibly in all interior applications and protected exteriors

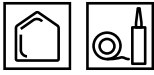
PRODUCT	ID CODE	CONTENT	COVERAGE	QTY
AEROSANA® VISCONN FIBRE	1AR01677	5 L	600 g/m <sup>2</sup>	1
AEROSANA® VISCONN FIBRE	1AR02633	600 ml	600 g/m <sup>2</sup>	1
AEROSANA® VISCONN FIBRE WHITE	1AR02750	600 ml	600 g/m <sup>2</sup>	1

**TECHNICAL DATA:**

Material:	Aqueous acrylic dispersion, fibre-reinforced
Surface weight:	approx. 200 - 400 g/m <sup>2</sup> , depending on subsurface and applied thickness
Coating application:	0.6 - 1.4 mm wet film
s <sub>d</sub> -value:	3.5 ±0.4 m (at 0.3 mm thickness)
s <sub>d</sub> -value humidity-variable:	0.15 - 5.00 m
Application temperature:	5 °C to 60 °C
Temperature resistance:	permanent -40 °C to 90 °C (dried)
Drying:	approx. 6 - 48 hours (at 20 °C; 65% rel. humidity) depending on subsurface and applied thickness
Coverage:	approx. 600 g/m <sup>2</sup> , depending on applied thickness; 1 L ≈ 1 kg
Storage:	5 °C - 25 °C, in a closed, airtight bucket. Stir well before application







# AEROSANA® FLEECE

Fleece Within the AEROSANA® VISCONN System for Covering Cracks or Joints

**APPLICATION:** AEROSANA® FLEECE is an embedded mesh for working with spray-on or brush-on seals from the AEROSANA® VISCONN family. It can be used to reliably cover cracks or joints that are wider than 3 mm (1/8") in the case of AEROSANA® VISCONN or 20 mm (3/4") in the case of AEROSANA® VISCONN FIBRE.

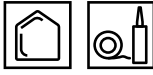
**ADVANTAGES:**

- ✓ Tested as part of the AEROSANA® VISCONN system
- ✓ Very malleable fleece material
- ✓ Excellent values in hazardous substance testing

ID CODE	LENGTH	WIDTH	CONTENT	ROLL/PACK
1AR01715	2 x 25 m	15 cm	7.5 m²	2

**TECHNICAL DATA:**

Material:	PET
Surface weight:	63 ±10 g/m²
Thickness:	0.7 ±0.15 mm
Tensile strength MD/CD:	90 ±15 N/5 cm / 145 ±15 N/5 cm
Elongation MD/CD:	75 ±15 % / 90 ±15 %



# AEROFIXX

Application Gun for AEROSANA® System Foil Cartridges

**APPLICATION:** For quick and easy application of AEROSANA® VISCONN and AEROSANA® VISCONN FIBRE sealants from 600 ml foil sausage. For use with air compressors capable of 6.8 bar (100 psi), 300 l/min air flow.

**ADVANTAGES:**

- ✓ Work more quickly: application and spreading of the sealant in a single working step
- ✓ Precise application of sealant: Different settings allow for bead or spray
- ✓ No brush required

ID CODE	CONTENT	QTY
1AR02714	1.6 kg	1

**TECHNICAL DATA:**

Material:	stable aluminum cylinder, ergonomic nylon handle
-----------	--







### Building Science

Building science begins with the basics of thermodynamics, focusing on the flow of heat, air, and moisture through buildings. It also covers essential topics like acoustic transmission, fire resilience, indoor air quality, natural light, and ventilation.

Pro Clima NZ Ltd offers courses tailored to various levels of expertise. Whether you're a builder seeking to enhance your practical knowledge of weathertightness and airtightness, or an experienced designer exploring intelligent air barriers, we're here to help you understand this vital field of applied science.



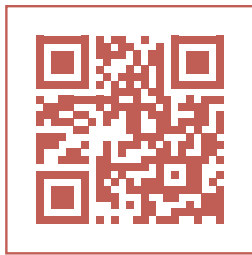
### Certified Installer Training

The Pro Clima NZ Certified Installer training course provides in-depth hands-on instruction in installing advanced airtightness and weather protection systems, equipping participants with the expertise to achieve certification and earn CPD points. Check the Pro Clima website for the next course date.



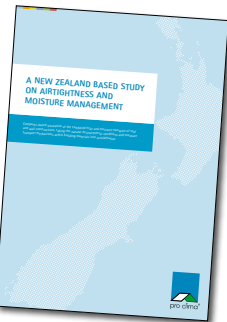
### WUFI® Hygrothermal Modelling

Learn about building performance analysis. Gain essential skills in WUFI® hygrothermal modelling with a course tailored for New Zealand's typical materials and climate conditions. Book now.



### pro clima CUBE – Coming to you

Experience hands-on training in advanced airtightness and weather protection systems for Builders and Designer at the pro clima CUBE. Our mobile facility is designed to bring practical, real-world expertise directly to your location. This course is open to everyone, regardless of prior experience with Pro Clima products and systems. Check Pro Clima's website for the location schedule and to book your attendance.



### Download your copy of the New Zealand based Study on airtightness and moisture management.



### Blower Door Airtightness Testing

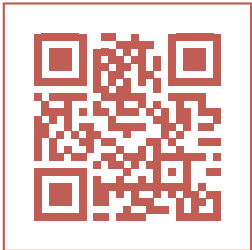
A Blower Door test measures a building's airtightness. This is a key element of energy efficiency in construction for almost every building. We offer demonstrations at your site as part of regular presentations, and specific training courses for operators of blower doors. To find out more, contact your nearest Pro Clima sales person.

TECHNICAL DATA:

Frame dimensions:	width 0.71 – 1.14 m length 1.32 – 2.43 m
Power source:	230 V / 50 Hz
Maximum airflow volume:	up to 7,200 m³/h
Features:	with aluminum frame, DG-1000 digital pressure and flow gauge and software TECTITE Express
Warranty:	1 year



Blower Door  
training and sales:



### WINCON Installation quality control

Quality control of airtightness with the pro clima WINCON. The simple and easy WINCON system creates pressure on the building envelope, revealing air leaks during construction. Short of a fully calibrated Blower Door system, the WINCON can aid you in your quest for building performance.

Loan a WINCON from Pro Clima today!

welcome@proclima.co.nz | 0800 PRO CLIMA (776 254)







# CONFIRMED BY TESTS

100 years

Permanent airtightness with pro clima!  
Tested for the entire usage period

- ✓ Reliable functioning tested for 100 years
- ✓ Independently confirmed
- ✓ Minimum requirements significantly exceeded

## Thermal insulation and airtightness should perform for more than 50 years

Adhesive tapes which are applied to attain airtightness in accordance with DIN 4108-7, SIA 180 or OENORM B 8110-2 should have a durability of 50 to 100 years – after all, this is the expected service life of thermal insulation layers, to ensure that they protect against damage due to convection and moisture vapour ingress. This period corresponds with reality as airtightness is currently being optimised and thermal insulation is being replaced or adapted for today's legal requirements on structures dating from the 1950s, 1960s and 1970s.

## As little as 17 years can be regarded as permanent

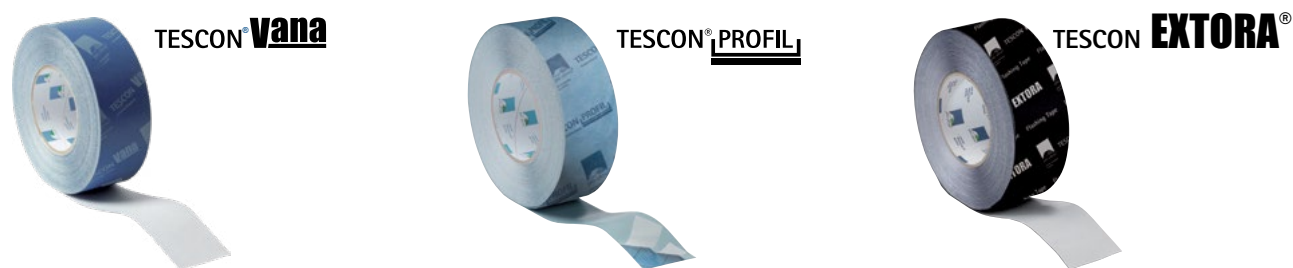
A process for accelerated aging of adhesive tape joints has been developed at the University of Kassel as part of a research project on "Quality assurance for adhesive-based joint technology in airtightness layers". With this process, adhesive tapes have to demonstrate certain specified minimum tensile strengths after being stored at increased air temperature and humidity (65 °C and 80% relative humidity) for a period of 120 days (this corresponds to around 17 years in reality). On successful completion of this test an adhesive tape can be regarded as permanent.

## pro clima adhesive tapes have been successfully tested for 100 years

As part of tests to ascertain the durability of airtight joints, pro clima's TESCON® VANA\*, UNI TAPE and TESCON No.1 adhesive tapes have also been subjected to accelerated aging at the University of Kassel under the conditions described above. At the request of pro clima, the test period was increased from 120 days to 700 days. Accelerated aging for 700 days corresponds to 100 years in reality. The test results for the three adhesive tapes from pro clima were also positive for this increased period of accelerated aging. The composition of the solid acrylate adhesive used on TESCON® PROFIL & TESCON EXTORA® sold in Australia and New Zealand is the same as TESCON® VANA that has been tested for 100-year adhesion.

## You are on the safe side with pro clima!

These demanding tests with increased test periods have confirmed the suitability of TESCON® VANA\* adhesive tape for the creation of permanent airtightness which surpass the requirements of DIN 4108-7, SIA 180 and OENORM B 8110-2. This confirms that Intelligent air barriers, airtight wood-based panels and exterior Weather Resistive Barriers can be reliably bonded using pro clima products!



\*The solid acrylate adhesive used on TESCON® PROFIL & TESCON EXTORA® sold in Australia and New Zealand is the same as TESCON® VANA tested for 100-year adhesion when used for airtightness only.

## Complete building envelope system products Made in Germany for New Zealand conditions.



AU GER UK EU IRL



NZ



Global





**Pro Clima New Zealand Ltd**  
General: [welcome@proclima.co.nz](mailto:welcome@proclima.co.nz)  
Sales: [order@proclima.co.nz](mailto:order@proclima.co.nz)  
Technical: [support@proclima.co.nz](mailto:support@proclima.co.nz)  
Freephone: 0800 PRO CLIMA (776 254)  
Web: [www.proclima.co.nz](http://www.proclima.co.nz)  
2024-9 15414

