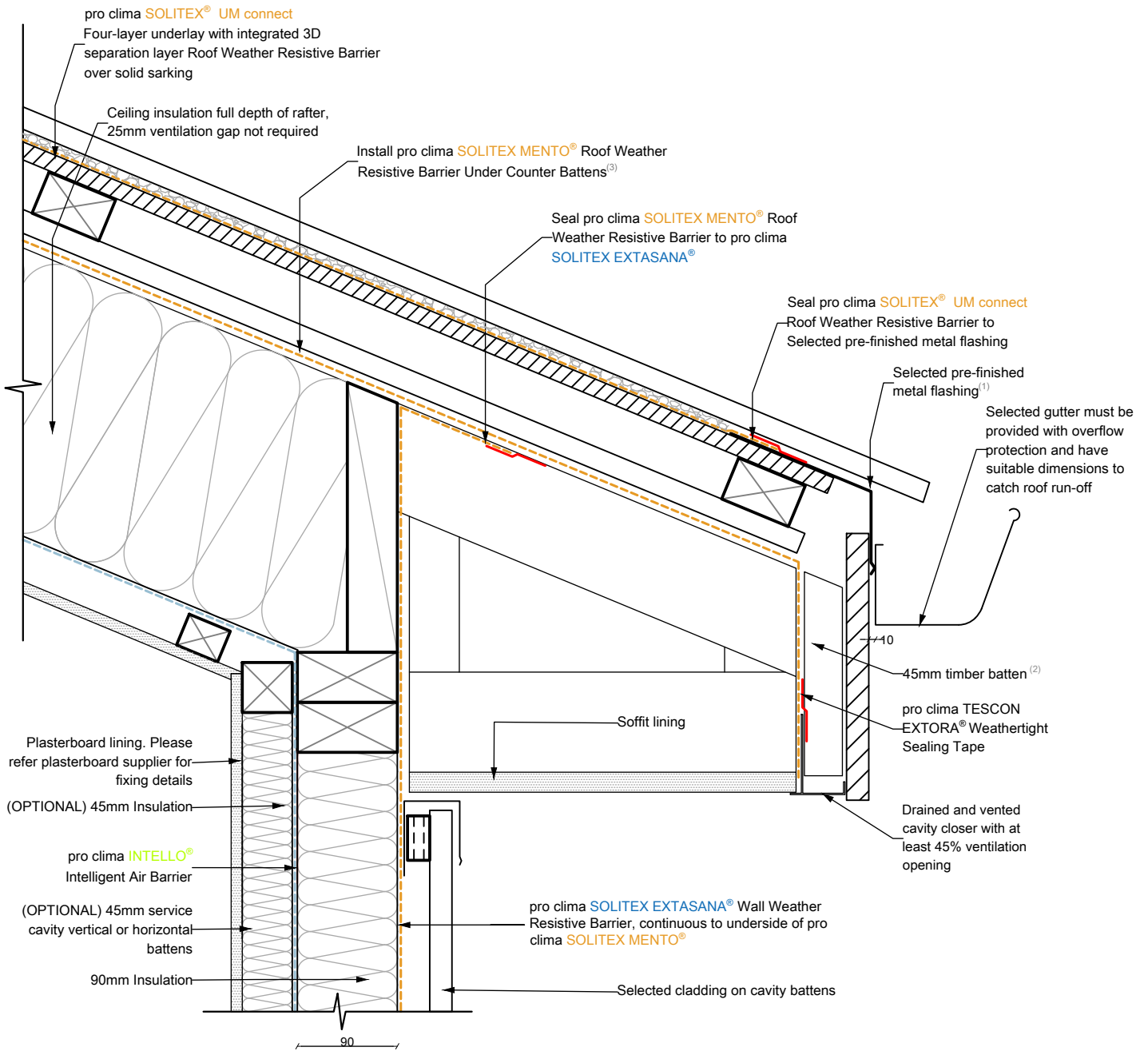


W-1133-1 SOLITEX® UM ON ABOVE SHEATHING VENTILATION



NOTES:

- 1: Additional ventilation can be achieved to increase the purge rate of heat in summer by utilising a perforated flashing at the eave.
- 2: Normal Ventilation: Timber packer should be 45mm in combination with at least 45% open area cavity closer.
Strong Ventilation: Timber packer should be 90mm in combination with at least 45% open area cavity closer.
- 3: A minimum 20mm counter batten will achieve 200cm²/m cross-sectional flow area.

Alternatively: SOLITEX EXTASANA ADHERO® or SOLITEX MENTO® can be used in conjunction with the 3D separation mesh.

The depth of the cavity can be reduced for cavity closers with higher open area ratios.

$$\text{Ventilation} = (\text{Packer}) \times (\text{Open Area Ratio})$$

$$\text{Normal Ventilation} \geq 200\text{cm}^2/\text{m}$$

