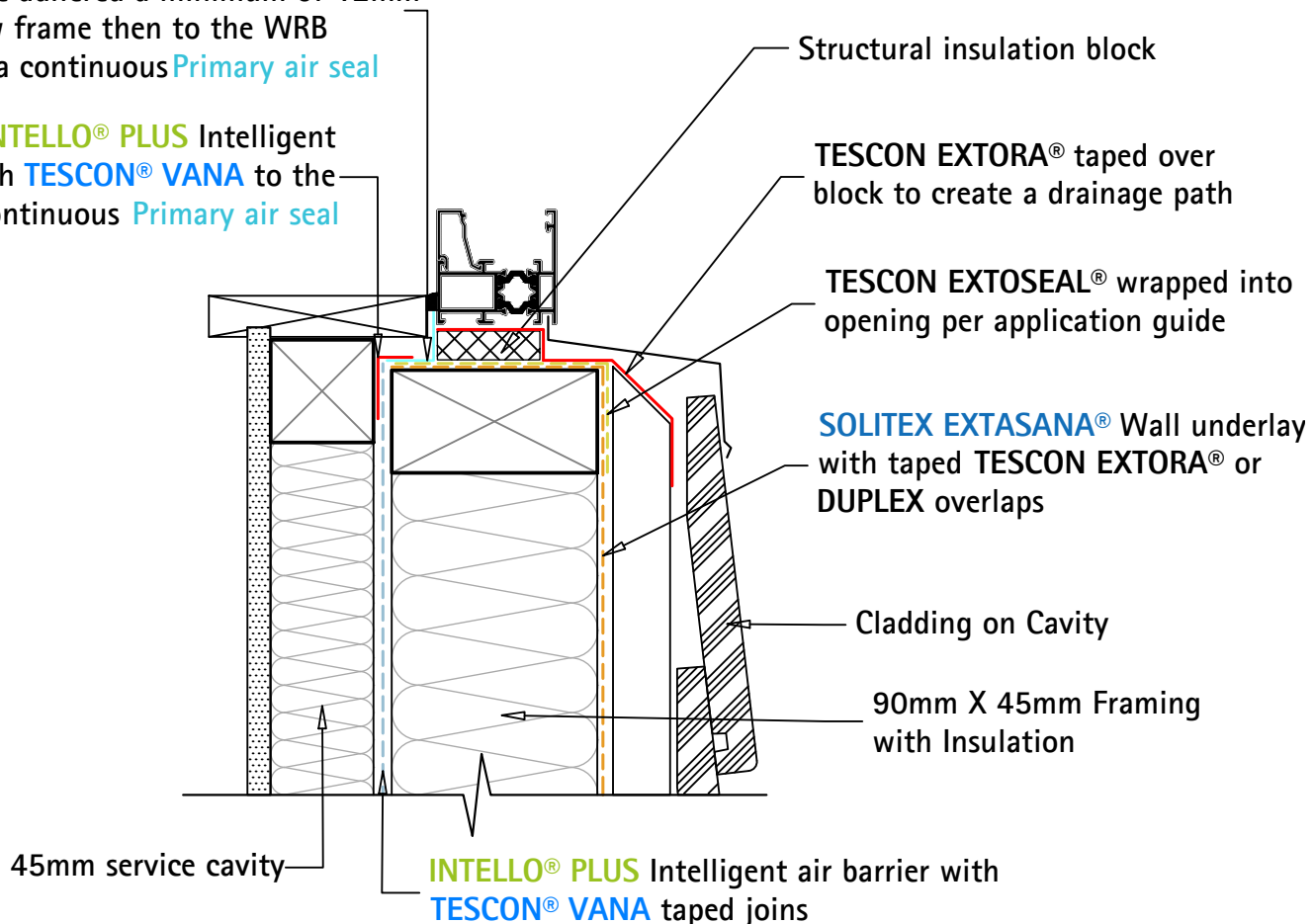


Thermally Broken Chairframe Sill on Structural Insulation Block

TESCON EXTORA® &/or TESCOX EXTORA® PROFIL should be adhered a minimum of 12mm onto the window frame then to the WRB system creating a continuous Primary air seal

Connect the INTELLO® PLUS Intelligent air barrier with TESCOX VANA to the continuous Primary air seal



NOTES:

- 1) Optimum weatherproofing for aluminium Joinery windows is achieved using a front Weather seal on the head and jambs and a internal Primary air seal.
 - a) Weather seal is required to deflect water and prevent the majority of driving rain entering the window joint.
 - b) Primary air seal is required to prevent the entrainment of water into the joint by wind pressure differentials. This creates pressure equalisation and this seal must be fault free in application.

- Primary air-seals connecting a weather-resistive barrier to joinery MUST be connected continuously around the perimeter of the joinery to create an uninterrupted airtight seal.

- The Primary air seal &/or Weather seal MUST NOT block the drainage path of the joinery or WRB.

- The drainage path does include the post-warranty failure of the mitres & mitre connectors, condensing surfaces, condensation channel weep holes and dissimilar material connections.

- For clarity, the above drawing shows the location and extent of Pro Clima WRB system components only. It is the designer's responsibility to ensure NZBC compliant claddings, flashings and linings are installed to protect all membranes and tapes from UV exposure and/or damage and to ensure the drainage of water from the joinery onto the front face of the selected cladding

