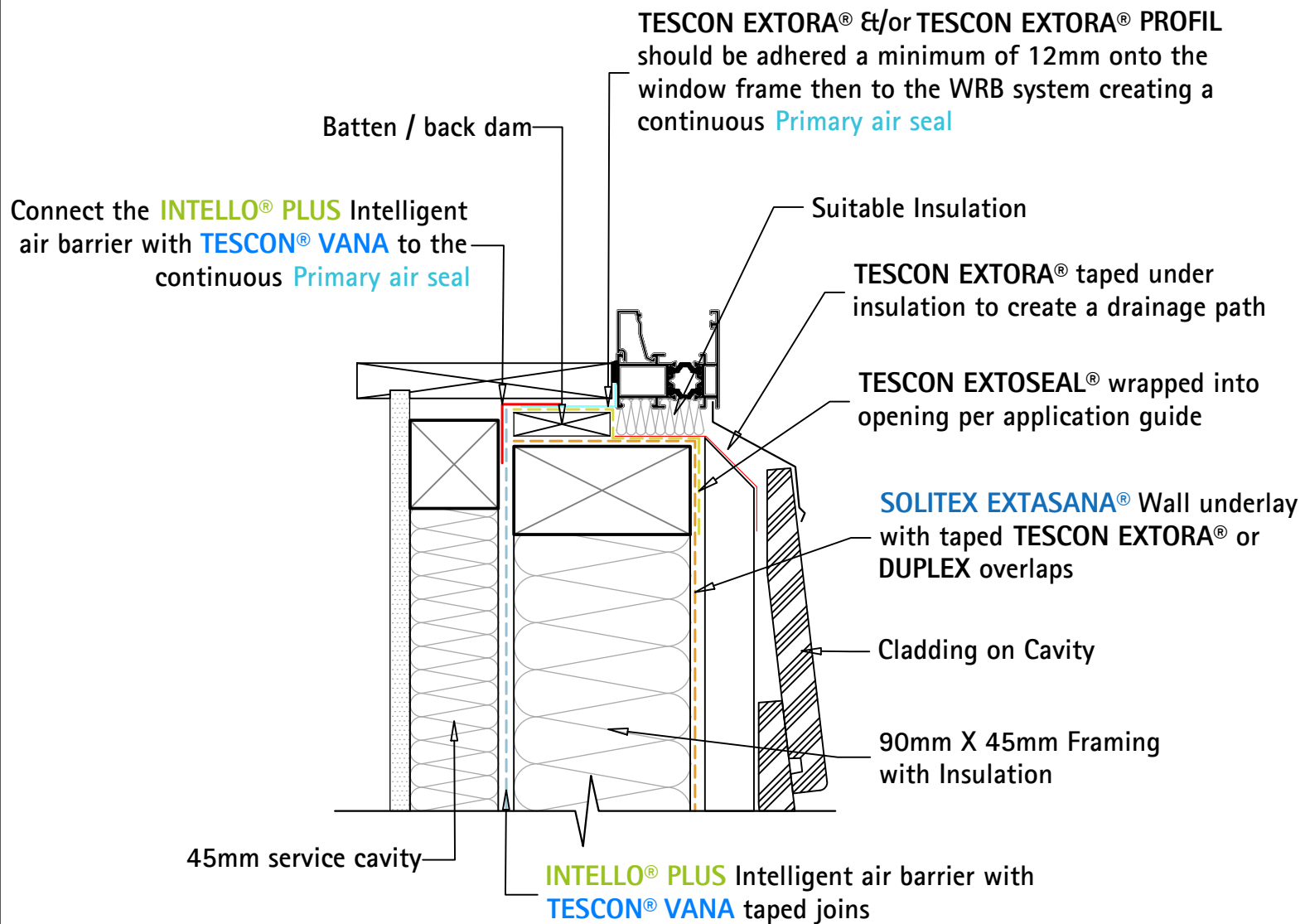


Recessed Thermally Broken Aluminium Sill With Back Dam



NOTES:

1) Optimum weatherproofing for aluminium Joinery windows is achieved using a front Weather seal on the head and jambs and a internal Primary air seal.

a) **Weather seal** is required to deflect water and prevent the majority of driving rain entering the window joint.

b) **Primary air seal** is required to prevent the entrainment of water into the joint by wind pressure differentials. This creates pressure equalisation and this seal must be fault free in application.

- **Primary air-seals** connecting a weather-resistive barrier to joinery **MUST** be connected continuously around the perimeter of the joinery to create an uninterrupted airtight seal.

- The **Primary air seal** &/or **Weather seal** **MUST NOT** block the drainage path of the joinery or WRB.

- The drainage path does include the post-warranty failure of the mitres & mitre connectors, condensing surfaces, condensation channel weep holes and dissimilar material connections.

- For clarity, the above drawing shows the location and extent of Pro Clima WRB system components only. It is the designer's responsibility to ensure NZBC compliant claddings, flashings and linings are installed to protect all membranes and tapes from UV exposure and/or damage and to ensure the drainage of water from the joinery onto the front face of the selected cladding

Title: Recessed thermally broken window sill on suitable insulation



pro clima³

www.proclima.co.nz

www.proclima.com.au

ID:W-4131

Issued: 07/07/2022

Revision: A

© This drawing is the property of Pro Clima NZ Ltd &/or Pro Clima Australia Pty Ltd and must not be copied without permission. This drawing is a guideline only and subject to change without notice. Thermal and hygrothermal performance should match specific design, materials and climate requirements. These can be confirmed by hygrothermal analysis using software e.g. WUFI®. Structural, fire and acoustic engineering design and the incorporation of building services (plumbing and electrical) should be signed-off by a suitably qualified engineer to ensure compliance with all health and safety requirements.