



SOLITEX EXTASANA®

Application Guide – Timber Frame



Weather Resistive Barrier for Weathertight Facade Systems





IMPORTANT

SOLITEX EXTASANA® is available in a 2.74m or 1.5m wide roll. SOLITEX EXTASANA® is fixed with fasteners e.g. galvanised "LITTLE GRIPPERS", or 6mm – 8mm staples at 300 mm centers vertically. In sea spray zones (ZONE D) metal fixings must be stainless steel.

1

Preparing Timber Framing

Ensure all studs are aligned and free from splinters. Plane or sand where necessary.

2

Initial Fixing Point

Apply 5-6 staples in the top corner before unrolling the membrane over the studs. Pull taut and fix opposite top corner with 5-6 staples.

3

Fix top edge SOLITEX EXTASANA®

Fix the membrane at each stud along the top edge ensuring the staples are within 150 mm from the edge.

4

Triangulate and Fasten

Pull the membrane down and taut at the centre and fix with 2-3 staples at the bottom edge.

5

Fix Bottom Corners

Pull taut and fix each bottom corner with 2-3 staples.

6

Successive Layers of SOLITEX EXTASANA®

Apply successive layers of SOLITEX EXTASANA® using the upside-down sequence compared to the bottom layer.

SYSTEM

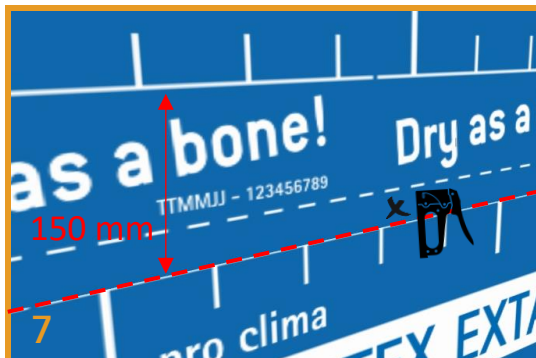
Weather Resistive Barrier

Wall



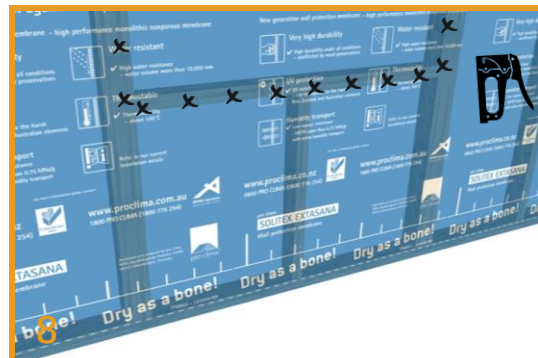
IMPORTANT

The PRESSFIX tool MUST be used to apply pressure to TESCON EXTORA® and TESCON EXTOSSEAL® to ensure the glue is activated and can reach maximum hold strength.



Overlapping SOLITEX EXTASANA®

The membrane shall be overlapped 150 mm. The white line represents the 150 mm overlap line and can be used as guidance to align successive layers.



Fixing SOLITEX EXTASANA® Around Windows

Staples shall be evenly placed around the window at 150 mm centers.



PRESSFIX is a malleable plastic tool for applying pressure to pro clima Adhesive Tapes to ensure long term durable bonding.



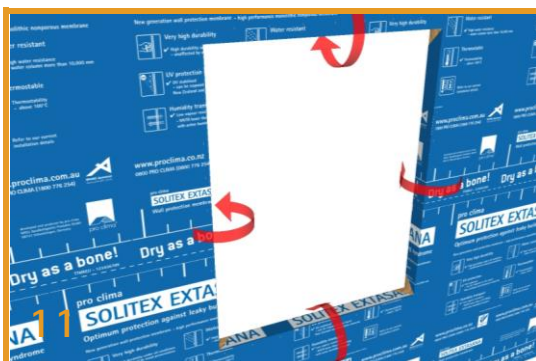
Connections Using TESCON EXTORA® Flashing Tape

Apply at minimum TESCON EXTORA® 60 mm to the horizontal joints and apply pressure with the PRESSFIX tool.



Window Reveal Dressing

Cut the membrane at window reveals with 45° angle cuts forming 4 flaps to be dressed into the reveal.



Folding into Window Opening

Into window opening, fold the SOLITEX EXTASANA® flaps back into the reveals.



Fixing into Window Opening

Into window opening, the flaps should be fixed into the window reveal using staples at the rear edge of the window reveal spaced evenly at 150 mm centres.



IMPORTANT

TESCON EXTOSEAL® is required to be stretched at the window corners. Overstretching TESCOX EXTOSEAL® can lead to thinning and tearing.

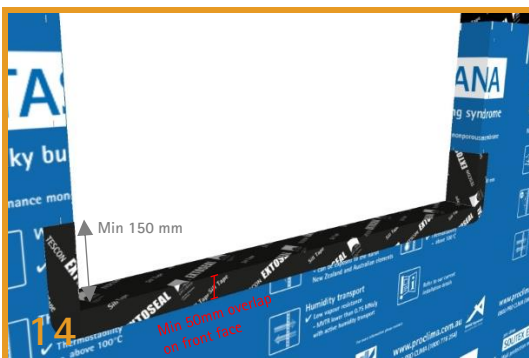


TESCON® WS ensures a surface suitable for adhesion of sealants compatible with aluminum.



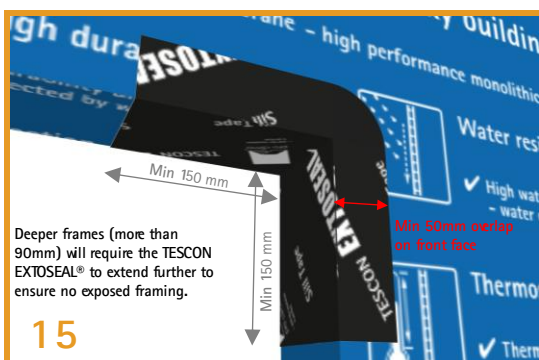
Sill Flashing – TESCOX EXTOSEAL®

Before installing TESCOX EXTOSEAL® ensure the surface is clean, dry and clear of objects protruding "broken staples & wood splinters".



Applying TESCOX EXTOSEAL® Sill Tape

TESCON EXTOSEAL® sill tape should extend minimum 150 mm up the jambs. The corners of the TESCOX EXTOSEAL® are stretched & adhered into place.



Window Corner Seal With TESCOX EXTOSEAL®

TESCON EXTOSEAL® should extend at least 150 mm in each direction. For wider frames the 200 mm wide TESCOX EXTOSEAL® should be used.



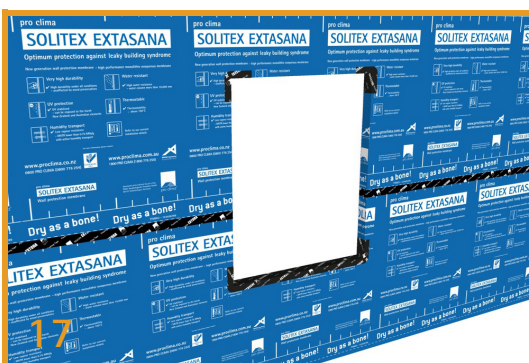
Butterfly

Where TESCOX EXTOSEAL® has been over stretched or damaged, apply a butterfly of TESCOX EXTORA®.



Window Wet Seals

TESCON® WS is applied to the perimeter of the window opening for the wet seal application according to the window detailing.



Basic Install Completed

SOLITEX EXTASANA®, TESCOX EXTORA® and TESCOX EXTOSEAL® form a continuous system. Any damage or tears should be patched with TESCOX EXTORA®.

SYSTEM

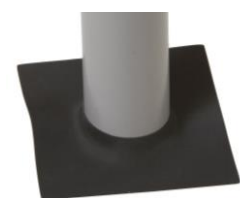
Weather Resistive Barrier

Wall



IMPORTANT

ROFLEX grommets come in various sizes. It is important the correct size for the pipe is selected and installed to ensure a weathertight seal.



ROFLEX
Sealing grommet made of strong and highly flexible EPDM for rapid and permanent weathertight sealing of pipes penetrations.



18

Cutting for Penetrations

Four slits are made in horizontal and vertical axis only large enough to fit the diameter of the pipe.



19

Push Pipe Through

The pipe is pushed through and opens up the tabs. Trim the tabs to allow for ROFLEX and TESCON EXTORA® application.



20

Fitting ROFLEX

Place ROFLEX over the pipe in a diamond orientation. It should be a tight fit over the pipe. The pipe should be smooth and clean.



21

TESCON EXTORA® Application

Start to apply TESCON EXTORA® 60 mm width at the bottom edge and apply pressure with the PRESSFIX tool.



22

TESCON EXTORA® Application

Apply TESCON EXTORA® around the whole grommet working anti-clockwise to ensure the top layers overlap the lower layers.



23

TESCON EXTORA® Application

At the TESCON EXTORA® tape overlaps ensure the top layer fully covers the end of the TESCON EXTORA® layer below for optimum weathertightness.



IMPORTANT

It is recommended the SOLITEX EXTASANA® is sealed to the slab edge to prevent airflow under the bottom plate. On loose, flakey masonry surfaces such as old sand-stock bricks or old concrete it may be necessary to apply TESCON® PRIMER RP using a brush.

24

Abutment

Where SOLITEX EXTASANA® meets dissimilar wall types (concrete or masonry) a butt joint is formed.

25

Membrane Butt Joint

SOLITEX EXTASANA® shall be fixed with 5-6 staple cluster in top corner and staples at 150 mm centres down the edge, and cut flush with the stud edge.

26

TESCON PRIMER RP® Overlap

TESCON® PRIMER RP shall be applied with a brush to any porous or uneven masonry surfaces.

27

Weatherproof Seal

TESCON EXTORA® 100 mm is applied by pressing into the corner with the PRESSFIX to ensure the tape does not protrude further than the cladding.



Applied to substrates to prepare for optimum adhesion such as concrete, masonry, timber, fibre cement, plywood, oriented strand board (OSB), and other porous or friable surfaces prior to application of TESCON EXTORA®.

SYSTEM

Weather Resistive Barrier

Wall



ORCON® CLASSIC is a durable airtight sealing glue suitable for bonding all pro clima products to any building material; smooth or rough, masonry or timber. It is fast drying and performs even in extreme humidity or damp conditions.



28

Soffit Junctions

SOLITEX EXTASANA® should be connected to any concrete soffits that the framed wall butts into.



29

Staple Top Edge of SOLITEX EXTASANA®

SOLITEX EXTASANA® is held in place by stapling 150 mm centers. Leaving a 30 mm overlap onto the concrete for adhering.



30

Seal to the Soffit Using ORCON® CLASSIC

The SOLITEX EXTASANA® 30 mm overlap should be adhered to the soffit using a bead of ORCON® CLASSIC. (See matrix at step 35 for compatibility).



31

Weatherproof Seal

Lay SOLITEX EXTASANA® overlap onto the ORCON® CLASSIC bead in full contact. DO NOT press the bead completely flat, allowing a lasting, flexible seal.



32

Seal to Slab Edge Using ORCON® CLASSIC

When the frame is finished flush with the slab edge, SOLITEX EXTASANA® is adhered to the slab edge using ORCON® CLASSIC.



33

Leave ORCON® CLASSIC Bead with Body Thickness

ORCON® CLASSIC should not be squashed flat but left with a suitable thickness to allow a flexible joint.



IMPORTANT

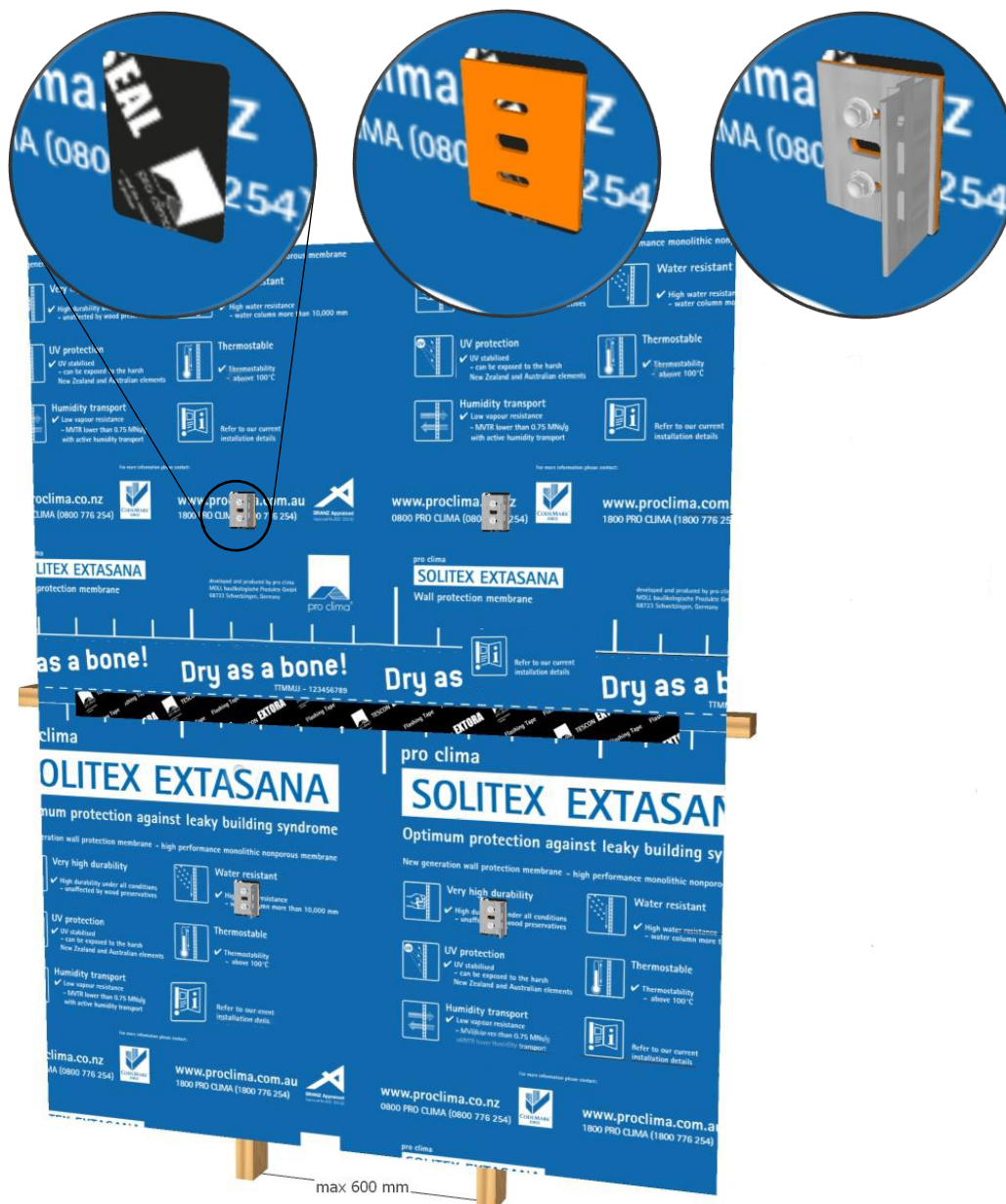
TESCON® NAIDECK is a double-sided butyl self-sealing strip. Sealing material is pulled into the hole created when a fixing is fitted.



TESCON® NAIDECK Double-sided, self-sealing strip for superior weathertightness of the underside of timber batten or cladding brackets.



TESCON EXTONSEAL® Flexible flashing tape for use around window and door openings. Small patches can be used to seal mounting clips.



34

Self Sealing Penetrations

TESCON® NAIDECK or TESCO EXTONSEAL® are butyl sealing products. Small patches cut to fit under the mounting brackets is recommended. The butyl sealing material is pulled into the hole created when a fixing is fitted.

SYSTEM

Weather Resistive Barrier

Wall



		TESCON EXTORA® TESCON EXTORA® PROFIL TESCON EXTORSEAL® TESCON® NAIDEX ORCON® CLASSIC CONTEGA® EXO KAFLEX mono/dup ROFLEX DUPLEX TESCON® PRIMER RP									
Timber, OSB, Plywood	dirty		✓								✓
	clean	✓	✓	✓	✓	✓					✓
Plaster board	clean	✓	✓	✓	✓						✓
Paint primers		✓	✓	✓	✓	✓				✓	✓
AEROSANA® VISCONN	dry / clean	✓	✓	✓	✓	✓	✓	✓	✓	✓	✓
PIR Polysiocanurate	on foil	✓	✓	✓	✓		✓	✓		✓	
	on PIR										
XPS Extruded Polystyrene	clean	✓	✓	✓	✓		✓	✓		✓	
EPS Expanded Polystyrene	clean	✓	✓	✓	✓		✓	✓		✓	
Expanding foams	dry										
Cement/Gypsum plaster	smooth	✓	✓	✓	✓	✓	✓	✓	✓	✓	✓
	rough				✓					✓	
	friable									✓	
Acrylic plaster	smooth	✓	✓	✓	✓	✓	✓	✓	✓	✓	✓
	rough				✓					✓	
Steel	galvanized	✓	✓	✓	✓				✓		
	bright	✓	✓	✓	✓				✓		
	painted	✓	✓	✓	✓				✓		
Aluminium	clean	✓	✓	✓	✓				✓		
Brickwork	rough				✓					✓	
	friable									✓	
Concrete	smooth	✓	✓	✓	✓	✓	✓	✓		✓	
	rough				✓					✓	
Fibre cement	clean	✓	✓	✓	✓	✓	✓	✓	✓	✓	✓
	friable									✓	
Window Frames	aluminium	✓	✓	✓	✓	✓			✓		
	PVC	✓	✓	✓	✓	✓			✓		
	timber	✓	✓	✓	✓	✓			✓		
Cables	flat	✓	✓	✓	✓						
	round	✓	✓	✓	✓		✓				
Pipes / ductings		✓	✓	✓	✓			✓			

Notes:

- Surface should always be dry.
- TESCON® PRIMER RP is always recommended for porous or friable surfaces prior to application of TESCON® Tapes.

35

pro clima Adhesive Product Matrix

SOLITEX EXTASANA® is compatible with all pro clima Adhesive Tapes and Sealants. Optimum weatherproofing is achieved when wind tight connections are made between SOLITEX EXTASANA® and other building materials and components. The table above provides guidance on the use of pro clima Adhesive Products when used to connect SOLITEX EXTASANA® with other common building materials.

Certificate of Installation

Please fill out all fields below and either fax or email a copy to Pro Clima NZ Limited.
Alternatively please go to our website www.proclima.co.nz to complete the Certificate of Installation. Thank you.

Pro Clima NZ Limited
PO Box 925
CBD
Wellington 6140
Phone: 04 589 8460
Fax: 04 589 8461
welcome@proclima.co.nz



CERTIFICATE OF INSTALLATION

Manufacturer's details:	Pro Clima NZ Limited		
Installer's company name:			
Date(s) of installation:		Quantity of material installed:	
Property/address where installation took place:		Batch number(s) of product installed:	
Location/zone where product(s) was installed:			
Comments on installation:			
Applicable installation instructions:			
Deviations from installation instructions:			
Installer Declaration:	We declare and confirm that the installation was completed as per the manufacturer's instructions.		
Installer signature:	Name:	Installer registration or approval number:	Date signed:
Installer supervisor signature:	Supervisor Name:	Supervisor registration or approval number:	Date signed:

A COPY OF THIS CERTIFICATE SHOULD BE PROVIDED TO THE BUILDER OR OWNER. COPY KEPT AS RECORD BY THE INSTALLATION COMPANY.

CERTIFICATE OF INSTALLATION

Manufacturer's details:	Pro Clima NZ Limited		
Installer's company name:	ABC Builders Limited		
Date(s) of installation:	Started 1/2/2012, completed 15/2/2012	Quantity of material installed:	5 rolls
Property/address where installation took place:	Lot 51, 32 Bay Street, Coffs Harbour, Wellington 6012	Batch number(s) of product installed:	13834
Location/zone where product(s) was installed:	The complete walls of the building, less 2 sections on the rear (south side) of the building, for access as per drawings		
Comments on installation:	No installation issues. All vertical joints taped with TESCON EXTORA. Penetrations sealed with KAFLEX and ROFLEX grommets.		
Applicable installation instructions:	pro clima SOLITEX EXTASANA Installation Guide, Dated 1.1.2012		
Deviations from installation instructions:	None		
Installer Declaration:	We declare and confirm that the installation was completed as per the manufacturer's instructions.		
Installer signature:	Name:	Installer registration or approval number:	Date signed:
Trevor Jones	Trevor Jones	BP123456	16/2/2012
Installer supervisor signature:	Supervisor Name:	Supervisor registration or approval number:	Date signed:
Fred Henry	Fred Henry	BP234567	16/2/2012

EXAMPLE

SYSTEM

Weather Resistive Barrier

Wall



TESCON EXTORA®
Pressure sensitive adhesive tape for overlaps and end laps in SOLITEX EXTASANA® system.



TESCON EXTONSEAL®
Flexible flashing tape for use around window and door openings as part of the SOLITEX EXTASANA® system.



KAFLEX and ROFLEX are airtight and weathertight sealing grommets made of strong and flexible EPDM.



ORCON® CLASSIC is a durable airtight sealing glue suitable for bonding all pro clima products.



Recommendations and requirements

- SOLITEX EXTASANA® can be used in either a 2740 mm or 1500 mm width horizontally or vertically. A minimum of 150 mm lap is required at joins and all vertical overlaps.
- SOLITEX EXTASANA® can be used as a wall underlay on timber framed buildings within the following scope: the scope limitations of NZBC Acceptable Solution E2/AS1, Paragraph 1.1; and, with absorbent wall claddings directly fixed to framing; and, with non-metallic, non-absorbent wall claddings directly fixed to the frame; and, with absorbent and non-absorbent wall claddings installed over an 18mm minimum drained cavity; and, with masonry veneer in accordance with NZBC Acceptable Solution E2/AS1; and, situated in NZS 3604 Building Wind Zones up to, and including 'Very High'.
- SOLITEX EXTASANA®, TESCON EXTORA® and TESCON EXTONSEAL® form a continuous system. Any damage or tears should be patched with TESCON EXTORA®.
- SOLITEX EXTASANA® can be used as a flexible wall underlay over rigid wall underlays on timber and steel framed buildings within the following scope: the scope limitations of NZBC Acceptable Solution E2/AS1, Paragraph 1.1 with regards to building height and floor plan area; and, with absorbent and non-absorbent wall claddings installed over an 18 mm minimum drained cavity; and, with masonry veneer in accordance with NZBC Acceptable Solution E2/AS1; and, situated in NZS 3604 Wind Zones up to and including 'Extra High'.
- When conditions on site are expected to be windy it is recommended that additional fixings are included at regular intervals.
- SOLITEX EXTASANA® can be exposed to the elements on site up to 180 days.
- It is recommended that the cladding mounting systems are installed as soon as possible after installing the membrane and close attention is paid to wind forecasts.
- pro clima KAFLEX/ROFLEX can be used for pipe and cable penetrations when necessary.

Certification



Your local support

Pro Clima New Zealand
04 589 8460 | 09 892 9900 | 03 327 4925
Technical: support@proclima.co.nz
General: welcome@proclima.co.nz
www.proclima.co.nz



...and the insulation is perfect!



Issued: 20/04/2022 Revision: