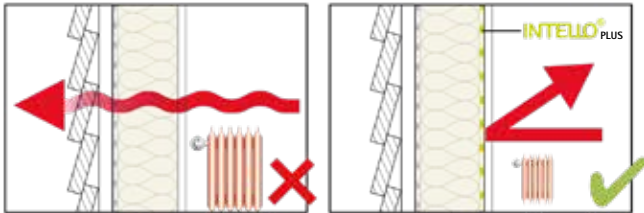


pro clima INTELLO[®] PLUS

High-performance vapour check

.... the essential element to ensure thermal insulation performs to expectations resulting in warmer, drier, healthier homes – all year round

Benefits of Airtightness



MOISTURE CONTROL IN SUMMER AND WINTER

ENERGY EFFICIENCY

- ✓ Reduced air infiltration saves energy so less heating / cooling is required
- ✓ Keeps your home warm in winter and cool in summer
- ✓ Solution to reduce overall energy dependence through more energy efficiency

FREEDOM FROM STRUCTURAL DAMAGE

- ✓ Prevents moisture build up in the construction
- ✓ High drying capacity through the intelligent INTELLO[®] membrane
- ✓ In-situ verification of the performance through Blower Door test

HEALTHY INDOOR AIR QUALITY

- ✓ Less contamination able to get into the building
- ✓ Prevents mould and mildew in the construction
- ✓ Better control of ventilation possible



Application

The Intelligent Airtightness System (IAS) eliminates uncontrolled air leakage through the building structure and therefore allows fibrous insulation to perform to expected performance levels. INTELLO[®] or INTELLO[®] PLUS operate as a 'humidity variable vapour control layer' offering high diffusion tightness in winter (protecting against interstitial condensation) and allowing maximum diffusion openness in summer (enabling rapid drying of the building envelope). This creates a durable dry structure, healthy indoor air quality (free from mould and mildew) and comfort. The (IAS) can be combined with all fibrous thermal insulation materials and is installed on the inner-side of the exterior walls and upper-most ceiling. Please refer to the installation guide on the back of the page.

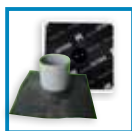
Advantages

Maximum protection for your construction; ideal prevention against structural damage and mould, even in the event of unexpected moisture intrusion; extremely high humidity-variable diffusion resistance.

System products



INTELLO[®] PLUS connection strip
The connection strip is designed to connect the airtightness membranes at junctions between internal walls and external walls/ceilings. Please refer to the INTELLO[®] PLUS connection strip installation guide



KAFLEX / ROFLEX
Sealing grommets for cables and pipes that penetrate the membrane



INSTAABOX
This box allows for airtight installation of electrical flushboxes for wall systems without service cavity



TESCON VANA
Multi-purpose adhesive tape for sealing membrane overlaps



TESCON PROFIL
Corner sealing tape for a secure and permanent airtight seal of junctions between INTELLO[®] membranes and windows or doors.

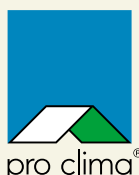


ORCON
Multi-purpose liquid adhesive for connections to rough adjoining structural components or mineral surfaces

www.proclima.co.nz
www.proclima.com.au

Pro Clima New Zealand Ltd
PO Box 925
CBD
Wellington 6140
Phone: 0800 PRO CLIMA (776 254)
Email: welcom@proclima.co.nz

Pro Clima Australia Pty Ltd
PO Box 924
Gosford
NSW 2250
Phone: 1800 PRO CLIMA (776 254)
Email: welcom@proclima.com.au



INTELLO[®] PLUS Installation instructions

The Intelligent Airtight System (IAS) is installed on the inner-side of exterior walls and uppermost ceiling to achieve an airtight building envelope.

Please note:

These instructions are suitable for use with INTELLO[®] and INTELLO[®] PLUS products.

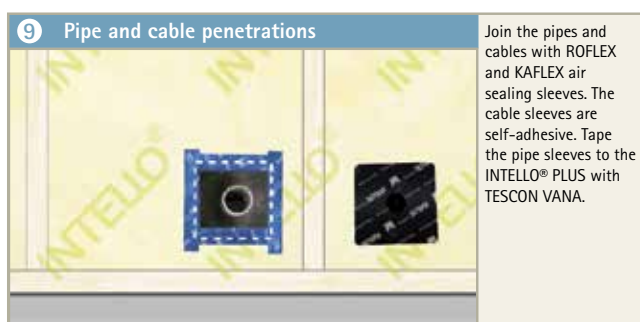
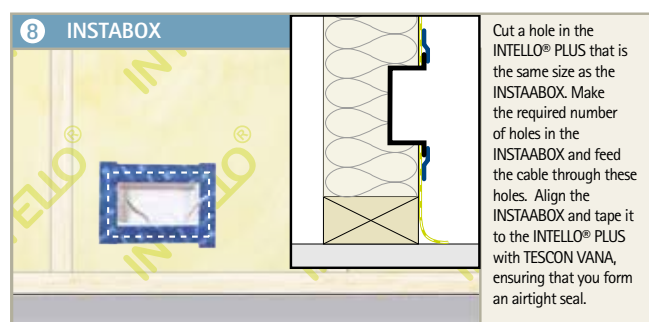
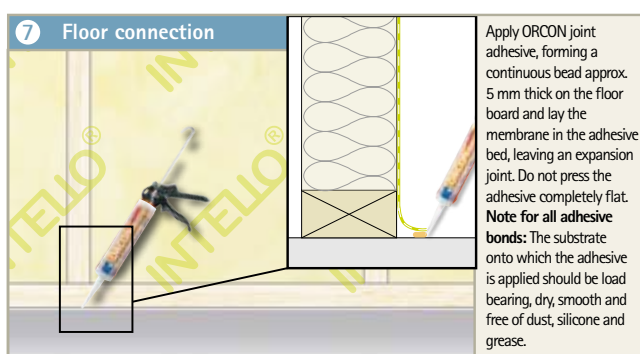
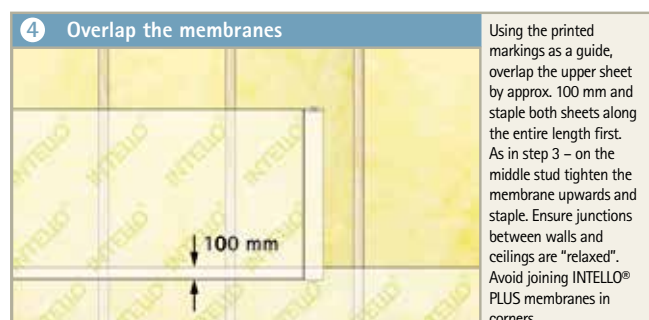
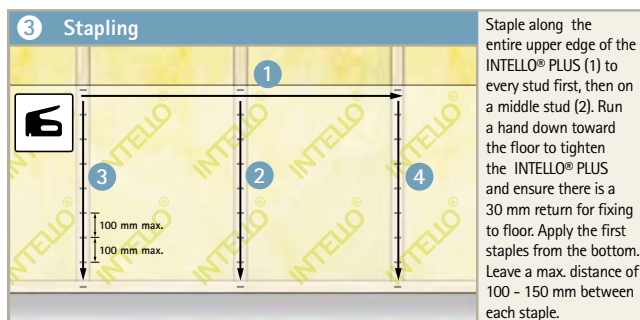
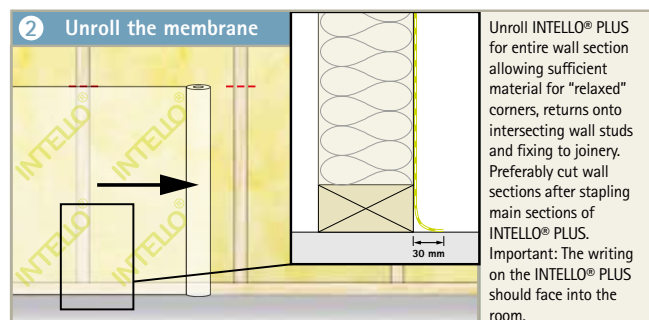
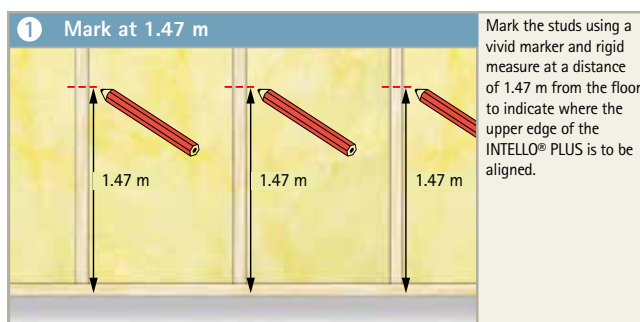
Ensure all insulation, plumbing, wiring and ducting is complete and properly fitted as if the building is ready for linings to be fixed.

Check the structure for nails, splinters and unnecessary protrusions. Avoid punctures and excessive bulging in the membrane.

Ensure the site and the structure (especially the floor) are dry, clean, dust and grease/adhesive free. Clear away loose timber and material to allow safe access to walls and ceilings.

Suggested equipment: Pneumatic stapler, staples, ruler, sharp knife, adhesive gun, vivid marker, ladder or scaffold, straight edge.

Check site safety procedures.



Further information about application and construction is given in the pro clima planning documentation and application recommendations. If you have any questions, please contact us.

www.proclima.co.nz
www.proclima.com.au

Pro Clima New Zealand Ltd
PO Box 925
CBD
Wellington 6140
Phone: 0800 PRO CLIMA (776 254)
Email: welcome@proclima.co.nz

Pro Clima Australia Pty Ltd
PO Box 924
Gosford
NSW 2250
Phone: 1800 PRO CLIMA (776 254)
Email: welcome@proclima.com.au

