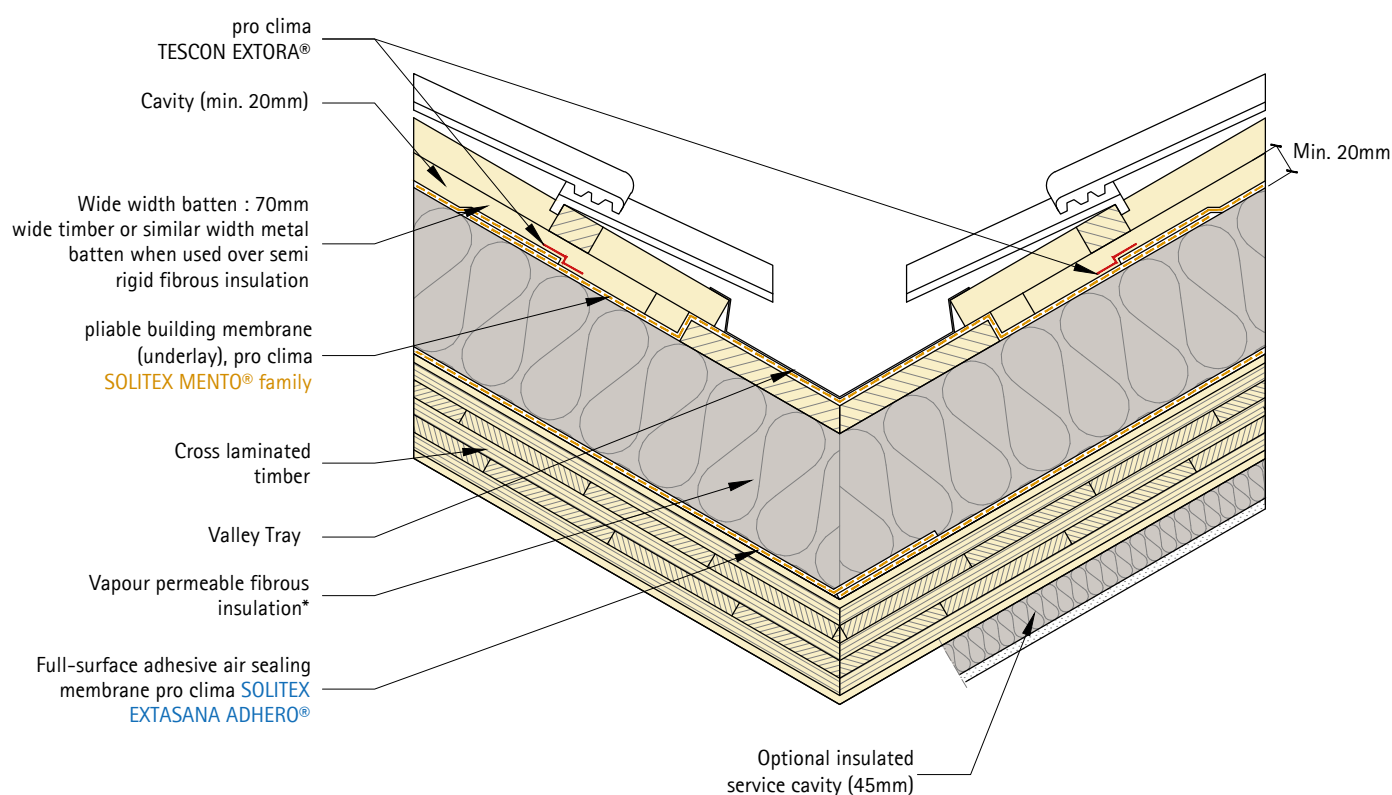


W1521-1 Pro Clima – Mass Timber Pitched Roof with flashing

With SOLITEX ADHERO®

Scale 1:10 @ A4 paper



*Notes:

- 1) Non-combustible insulation types may be required by local regulations.



pro clima®
www.proclima.co.nz
www.proclima.com.au

Title: Mass Timber Valley
With SOLITEX ADHERO®

ID: W1521-1

Issued: 29/03/2023

Revision:

© This drawing is the property of Pro Clima NZ Ltd &/or Pro Clima Australia Pty Ltd and must not be copied without permission. This drawing is a guideline only and subject to change without notice. Thermal and hygrothermal performance should match specific design, materials and climate requirements. These can be confirmed by hygrothermal analysis using software e.g. WUFI®. Structural, fire and acoustic engineering design and the incorporation of building services (plumbing and electrical) should be signed-off by a suitably qualified engineer to ensure compliance with all health and safety requirements.